

# SEQ Water Grid: Improving climate resilience

## Aspley Reservoir



August 2017

### Infrastructure upgrades in your neighbourhood

Seqwater is upgrading parts of the SEQ Water Grid in your area to continue to provide a safe, secure and cost-effective drinking water supply to South East Queensland.

The SEQ Water Grid is our connected network of dams, water treatment plants, reservoirs, pump stations and pipelines. The grid allows us to move water around the region, from Noosa in the north, to Coolangatta in the south.

### Upcoming work in your area

We are upgrading water infrastructure at Aspley Reservoir off Lawrence Road, Aspley.

The project involves modifying underground pipelines at various locations within the grounds and building a new water quality maintenance facility to help us move water from the south of Brisbane to the northern region and boost the disinfection of treated water.

This is one of a number of projects across the northern region to improve the reliability of our bulk water infrastructure. Most importantly, it will increase our ability to respond to water supply and quality challenges during times of extreme weather.

### Timing

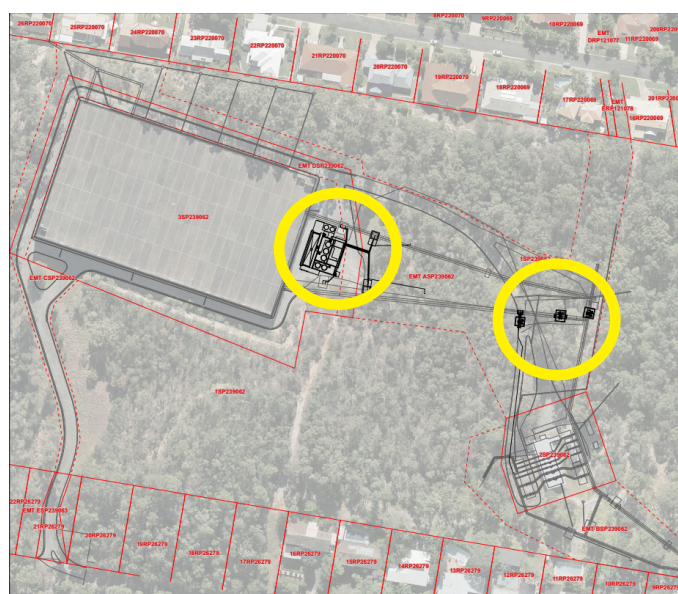
The whole project will take about 12 months to complete with pipeline upgrades starting in early August 2017, subject to weather and unexpected delays.

Working hours are between 7am and 5.30pm, Monday to Friday, unless otherwise advised. Night work will be required at times, but we will notify nearby residents well in advance.

### Location

We will be working at various locations within the Aspley Reservoir site (see map above).

The water quality maintenance facility will be built next to the existing water reservoir on the eastern side.



### What to expect

The project will involve earthworks, cutting and welding, laying concrete, constructing a 170m<sup>2</sup> steel framed building and chemical storage bund, installing new water quality instrumentation and lighting, as well as laying new underground water pipes and valves.

Construction equipment will include, but is not limited to, cranes, excavators, drilling machinery, trucks and utility vehicles.

Trucks will be accessing the site regularly to deliver equipment and materials. A temporary site office will be established within the reservoir grounds.

If you are in the area, please look out for signage, follow the instructions of our workers and do not pass any barricades we have erected for your safety.

There will be construction noise, dust and traffic, as well as temporary changes to public access in the area. We recognise this work will impact neighbours at times, but we will try to work closely with you to minimise disruptions where possible.

# SEQ Water Grid: Improving climate resilience Aspley Reservoir



## Your water supply

We do not expect interruptions to your local water supply as a result of this work.

## About Seqwater

Seqwater is the Queensland Government statutory authority responsible for providing a safe, secure cost-effective bulk water supply for 3.1 million people across South East Queensland. We also provide irrigation water to 1,200 rural customers, as well as essential flood mitigation services, and a range of recreation facilities at our dams, lakes and parks.

## Find out more

We will be in contact with nearby residents again as work progresses or to find out more:

**p** 1800 901 570

**e** [communications@seqwater.com.au](mailto:communications@seqwater.com.au)

**w** [seqwater.com.au](http://seqwater.com.au)

**f** [facebook.com/seqwater](https://facebook.com/seqwater)

**t** [@seqwater](https://twitter.com/seqwater)