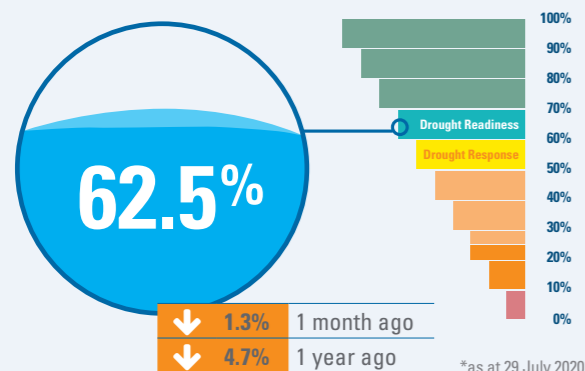
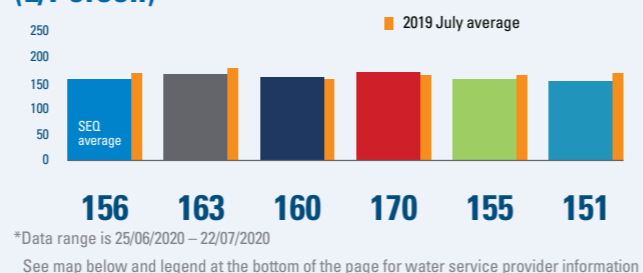


Water Grid capacity



Average daily residential consumption (L/Person)



Dam storage levels

*Data correct at 29 July 2020 – Dams selected are largest storages for North, South and Central areas. Visit the Seqwater website for more information.

Baroon Pocket

Full supply capacity **61,000 ML**
Current capacity **55,341 ML**

↑ 0.4% 1 week ago
↓ 1.0% 1 month ago
↓ 8.6% 1 year ago

STORAGE LEVEL 90.7%

North Pine (Lake Samsonvale)

Full supply capacity **214,302 ML**
Current capacity **127,979 ML**

↓ 0.1% 1 week ago
↓ 1.6% 1 month ago
↓ 9.0% 1 year ago

STORAGE LEVEL 59.7%

Wivenhoe/Somerset

Full supply capacity **1,545,089 ML¹**
Current capacity **843,686 ML**

No Change 1 week ago
↓ 1.0% 1 month ago
↓ 5.0% 1 year ago

STORAGE LEVEL 54.8%

¹combined dam levels

Hinze

Full supply capacity **310,730 ML**
Current capacity **290,469 ML**

↑ 0.7% 1 week ago
↓ 0.8% 1 month ago
↑ 0.8% 1 year ago

STORAGE LEVEL 93.5%

Grid operations and overall water security position

Although there was some promising rainfall in South East Queensland (SEQ) towards the end of July, it was not substantial enough or in the right areas to make an impact on storage levels. Due to the lack of significant rainfall and inflows, the SEQ Water Grid storage continues to reduce and is currently sitting at 62.5%, down from 63.8% last month. Lake Wivenhoe – the region’s largest water storage – has now had two consecutive months of levels below 50%.

Average SEQ water usage has increased marginally this month to 156 litres per day (LPD) from the record 144 LPD this time last month. This is still a good result compared to 2019 usage this time last year at 168 LPD. The continual reduction in water use is encouraging and is very close to the 150 LPD water demand target set for Drought Response at 60%.

The Southern Regional Water Pipeline (SRWP) continues to operate in a northerly direction. The northern pipeline interconnector continues to operate in a northerly direction to support essential works in the North at Landers Shute.

Even with the reduction in water usage, the SEQ Water Grid storage level continues to decrease and SEQ remains in the ‘drought readiness’ phase of the region’s Drought Response Plan.

Combined storage level this time last year was 67.2% and if the same conditions experienced in 2019 were repeated this year, the level could reach the 60% Drought Response trigger by mid-September 2020. The BOM climate outlook for August to October is for hotter than average weather and higher than average rainfall.

Water Grid storage

Water Grid Storage actual drawdown to 29 July 2020, and projected draw down.

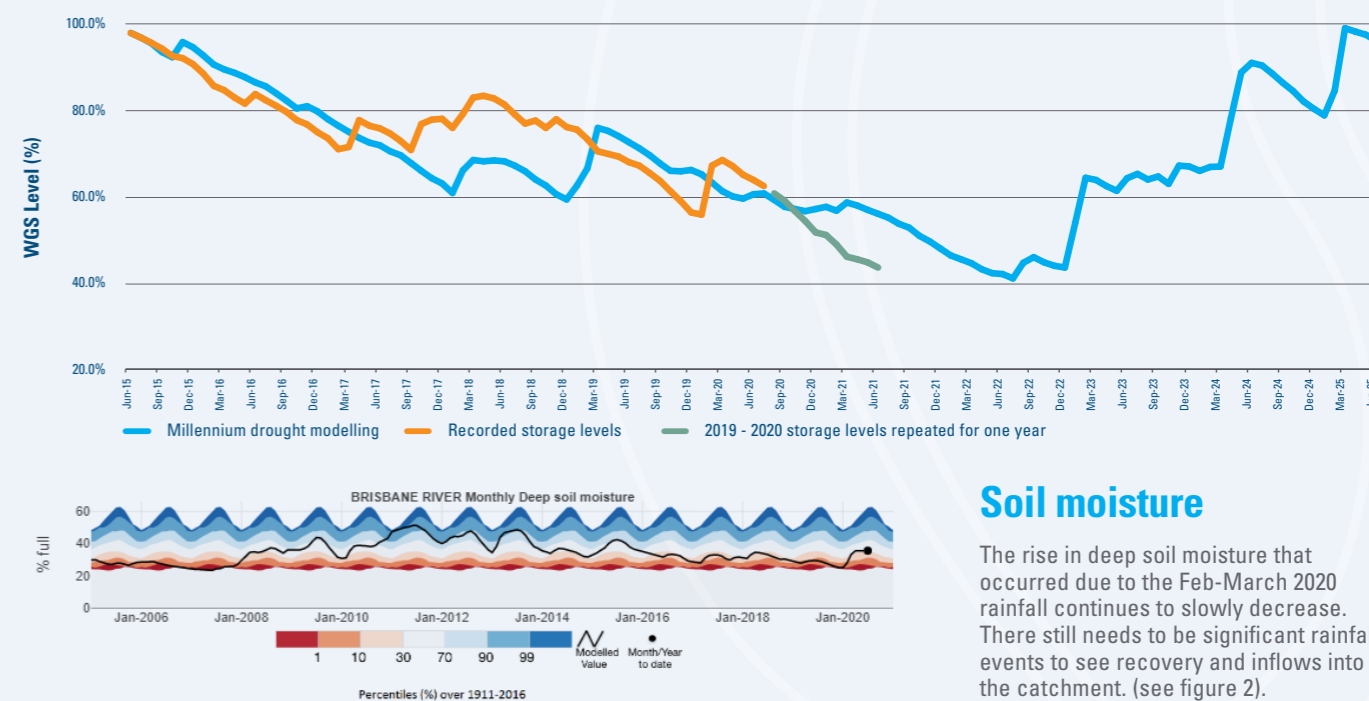
The Water Grid drawdown graph show historical storage data and a projected draw down if the same rate observed between January 2019 and December 2019 occurred in the corresponding months from July 2020 until June 2021.¹ The millennium drought is shown to compare drawdowns over an extended drought period (see figure 1).

Figure 1: Water Grid storage drawdowns.

¹ This projected drawdown does not account for differences in demand and supply conditions in 2020, such as continued operation of the Gold Coast Desalination Plant.

End of month storage level assuming repeat of 2019 storage level decline:

| | | | |
|--------|-------|--------|-------|
| Aug-20 | 60.9% | Feb-21 | 49.1% |
| Sep-20 | 59.2% | Mar-21 | 46.3% |
| Oct-20 | 56.8% | Apr-21 | 45.7% |
| Nov-20 | 54.5% | May-21 | 45.0% |
| Dec-20 | 51.9% | Jun-21 | 43.8% |
| Jan-21 | 51.3% | | |



Soil moisture

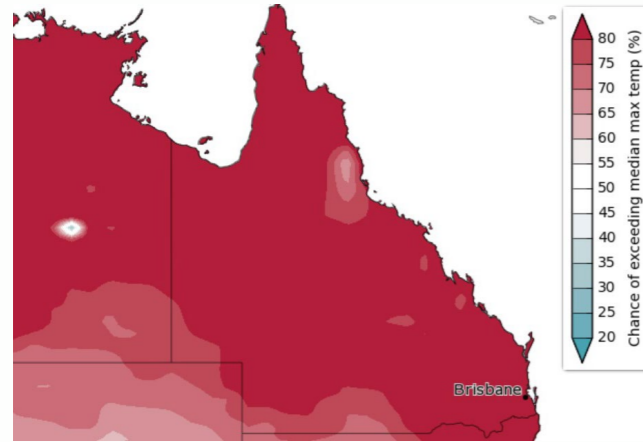
The rise in deep soil moisture that occurred due to the Feb-March 2020 rainfall continues to slowly decrease. There still needs to be significant rainfall events to see recovery and inflows into the catchment. (see figure 2).

Figure 2: Brisbane River catchment monthly deep soil moisture – modelled estimate to May 2020 (source Bureau of Meteorology AWRA-L)

Weather forecasts

Temperature

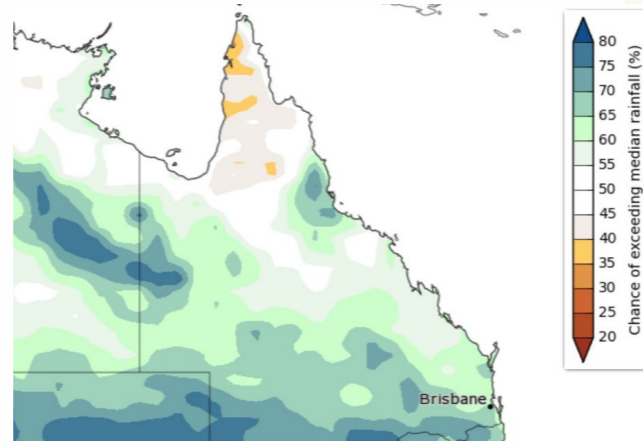
The August median maximum temperature for the Brisbane area is forecast at 22.3°C. The chance of exceeding the median temperature is very likely with an over 80% probability. The past accuracy of these predictions has been classed as “high”.



Source: <http://www.bom.gov.au/climate/outlooks/#/temperature/maximum/median/monthly/0>

Rainfall

Median rainfall for the Brisbane area in August is forecast at 20mm. There is a likely chance of exceeding the median with a 60%-70% probability. The past accuracy of these predictions has been classed as “very high”.



Source: <http://www.bom.gov.au/climate/outlooks/#/rainfall/median/monthly/0>

Off-grid community drought status

The SEQ Water Grid allows us to move treated drinking water around the region. Off-grid communities are not connected to the SEQ Water Grid.

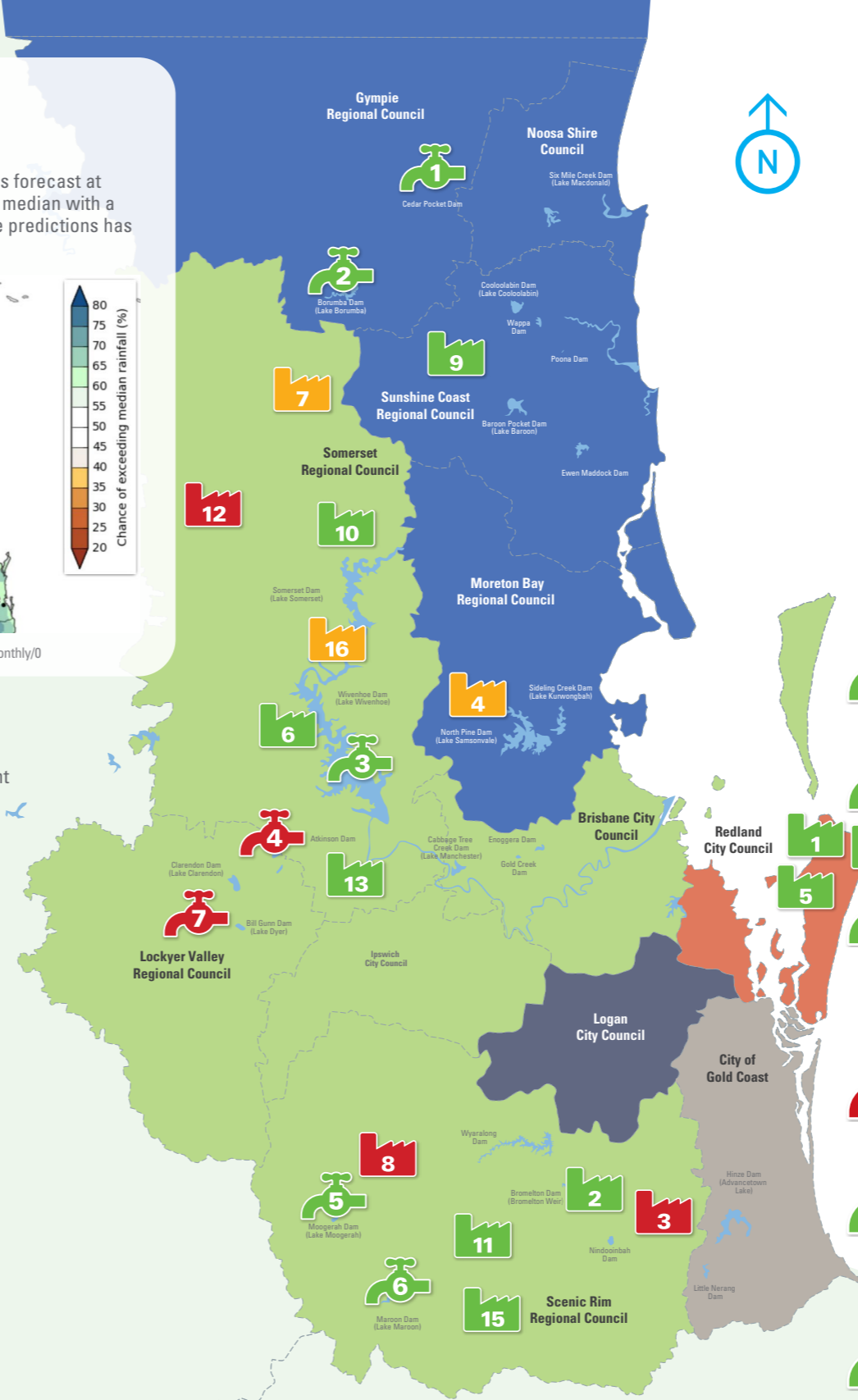
This table has been updated as at 27 July 2020.

- Low probability of reaching drought trigger in next 3 months
- Medium probability of reaching drought trigger in next 3 months
- High probability of reaching drought trigger in next 3 months

- 1 Amity Point**
Supply: North Stradbroke Island groundwater
Standing water level 16.615 m AHD
Level 1: drought trigger at 15 m AHD
- 2 Beaudesert**
Supply: Maroon Dam 55.8%
Level 1: drought trigger at 50% dam level
- 3 Canungra**
Supply: Canungra Creek Stream flow ~42.86 ML/day
Level 1: drought response in effect as of 4/6/20
Level 1b: drought trigger at <1 ML/day flow
- 4 Dayboro**
Supply: groundwaterWell No. 1
standing level >RL 41.10 m AHD
Level 1: drought trigger at RL 40.7 m AHD
- 5 Dunwich**
Supply: North Stradbroke Island groundwater
Standing water level 16.615m AHD
Level 1: drought trigger at 15 m AHD
- 6 Esk**
Supply: Wivenhoe Dam 47.4%
(Regional Water Grid Storages response)
Drought response at 60% grid storage level
- 7 Jimna**
Supply: Yabba Creek Water has ceased flowing
over the weir – water being carted from Kilcoy
Level 3: drought trigger — when the Big Hole is 8m below
normal operating level

- 8 Kalbar (Boonah, Aratula and Mount Alford)**
Supply: Moogerah Dam 26.5%
Level 1: drought response in effect as of 9/9/19
Level 2: drought trigger at 25% dam level
- 9 Kenilworth**
Supply: Wells near the Mary River
Bellbird Creek flow ~26.50 ML/day
Level 1: drought trigger at 0 ML/day flow
- 10 Kilcoy**
Supply: Somerset Dam 77.9%
(Regional Water Grid Storages response)
Drought: response at 60% grid storage level
- 11 Kooralbyn**
Supply: Maroon Dam 55.8%
Level 1: drought trigger at 50% dam level
- 12 Linville**
Supply: Brisbane River at Linville — 1.71 ML/day
Level 1: drought trigger - water treatment plant
unable to meet demand
- 13 Lowood**
Supply: Wivenhoe Dam 47.4%
(Regional Water Grid Storages response)
Drought response at 60% grid storage level
- 14 Point Lookout**
Supply: North Stradbroke Island groundwater
Standing water level 16.615 m AHD
Level 1: Drought trigger at 15 m AHD

- 15 Rathdowney**
Supply: Maroon Dam 55.8%
Level 1: drought trigger at 50% dam level
- 16 Somerset**
Supply: Somerset Dam 77.9% (Regional Water Grid Storages response)
Drought response at 60% grid storage level



Water Supply Scheme status

Seqwater supplies water to rural landholders and businesses that are licensed to take water from dams and waterways via Water Supply Schemes. The amount of water that can be extracted by licensed irrigators varies according to local water conditions. In times of drought or low flows, irrigation entitlements may be restricted or suspended.

This data has been updated as at 30 July 2020

- 100% allocated
- < 100% allocated
- 0% allocated

- 1 Cedar Pocket Water Supply Scheme**
Cedar Pocket Dam currently 85.5% (up 1.6% from last month)
Announced allocations: Medium Priority 100%
- 2 Mary Valley Water Supply Scheme**
Borumba Dam currently 92.6% (down 1.8% from last month)
Announced allocations: Medium Priority 100%
(also supplies high priority)
- 3 Central Brisbane Water Supply Scheme**
Wivenhoe Dam/Somerset Dam currently 54.8%
(down 1.0% from last month)
Announced allocations: Medium Priority 100%
(also supplies high priority)
* Proposed amendments to water sharing rules in process.
- 4 Lower Lockyer Water Supply Scheme**
Atkinson Dam currently 5.4% (no change from last month)
Announced allocations: Medium Priority 0%
- 5 Warrill Valley Water Supply Scheme**
Moogerah Dam currently 26.5% (down 1.9% from last month)
Announced allocations: Medium Priority 100%
(also supplies high priority)
* Proposed amendments to water sharing rules in process.
- 6 Logan River Water Supply Scheme**
Maroon Dam currently 55.8% (down 1.0% from last month)
Announced allocations: Medium Priority 100%
(also supplies high priority)
- 7 Central Lockyer Water Supply Scheme**
Clarendon Dam & Bill Gunn Dam currently 0.8%
(1.5% decrease from last month)
Announced allocation (surface water): Morton Vale 0%, Medium Priority 0% (all zones)
Announced allocation (ground water): TBD

*Groundwater level in metres Australian Height Datum (AHD)