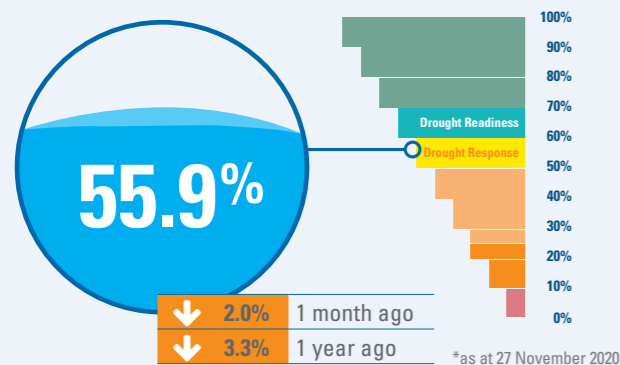
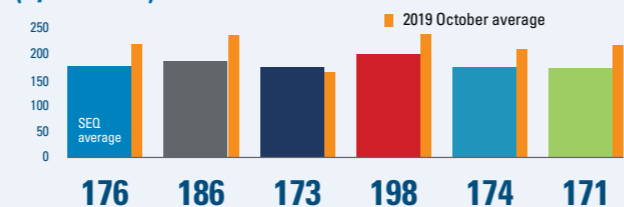


Water Grid capacity



Average daily residential consumption (L/Person)



*Data range is 29/10/2020 – 25/11/2020 and 31/10/2019 – 27/11/2019
See map below and legend at the bottom of the page for water service provider information



Dam storage levels

*Data correct at 27 November 2020 – Dams selected are largest storages for North, South and Central areas. Visit the Seqwater website for more information

Baroon Pocket

Full supply capacity **61,000 ML**
Current capacity **48,798 ML**

- ↓ 1.0% 1 week ago
- ↓ 2.9% 1 month ago
- ↓ 3.8% 1 year ago

STORAGE LEVEL 80.0%

North Pine (Lake Samsonvale)

Full supply capacity **214,302 ML**
Current capacity **110,251 ML**

- ↓ 1.1% 1 week ago
- ↓ 1.8% 1 month ago
- ↓ 8.6% 1 year ago

STORAGE LEVEL 51.4%

Wivenhoe/Somerset

Full supply capacity **1,545,089 ML¹**
Current capacity **752,494 ML**

- ↓ 1.3% 1 week ago
- ↓ 2.0% 1 month ago
- ↓ 3.2% 1 year ago

STORAGE LEVEL 48.7%

¹combined dam levels

Hinze

Full supply capacity **310,730 ML**
Current capacity **265,301 ML**

- ↓ 1.5% 1 week ago
- ↓ 2.2% 1 month ago
- ↓ 1.6% 1 year ago

STORAGE LEVEL 85.4%

Grid operations and overall water security position

South East Queensland (SEQ) continues to be in Drought Response with Water Grid storage at 55.9%, down from 57.9% at the end of October.

The hot dry weather over the month of November has seen dam levels continue to fall with Lake Wivenhoe remaining below 50% capacity for six consecutive months.

This increase of hot and dry weather also saw the average resident litre per day (LPD) usage increase to 176 LPD up from 169 LPD during October. While less than the same period last year (218 LPD), it is still 26 litres per person per day above the recommended 150 LPD under the SEQ drought response plan.

The Gold Coast Desalination Plant continues to operate up to 100% capacity to supplement water supply for SEQ. Nearly all the region's off-grid communities are now in various stages of drought response monitoring (see below for additional details).

It serves as a reminder to all residents in SEQ to please remain conscious of their water use. Reminding residents of the drought

and information on how to help reduce water usage continues to be provided to SEQ communities from Seqwater and water service providers.

Despite the recent dry weather conditions, The Bureau of Meteorology (BOM) outlook for December to February is for wetter than average conditions with a 65-75% chance of above median rainfall and for a wetter summer ahead. The El Niño/Southern Oscillation outlook from BOM remains at "La Niña" with modelling suggesting La Niña will continue to at least February 2021.

The Southern Regional Water Pipeline continues to operate in a northerly direction. Production from the Gold Coast Desalination Plant is currently being maximised. The Northern Pipelines (NPI 1&2) have been operating in a southerly direction, however from the start of December NPI1 will start to flow North. NPI 2 will continue to flow South. The grid flow operations help to distribute water in SEQ where it is needed most.

End of month storage level decline assuming a repeat of the particularly dry 2019 year (2020 data not used):

Dec-20	52.87%	Feb-21	50.07%
Jan-21	52.35%		

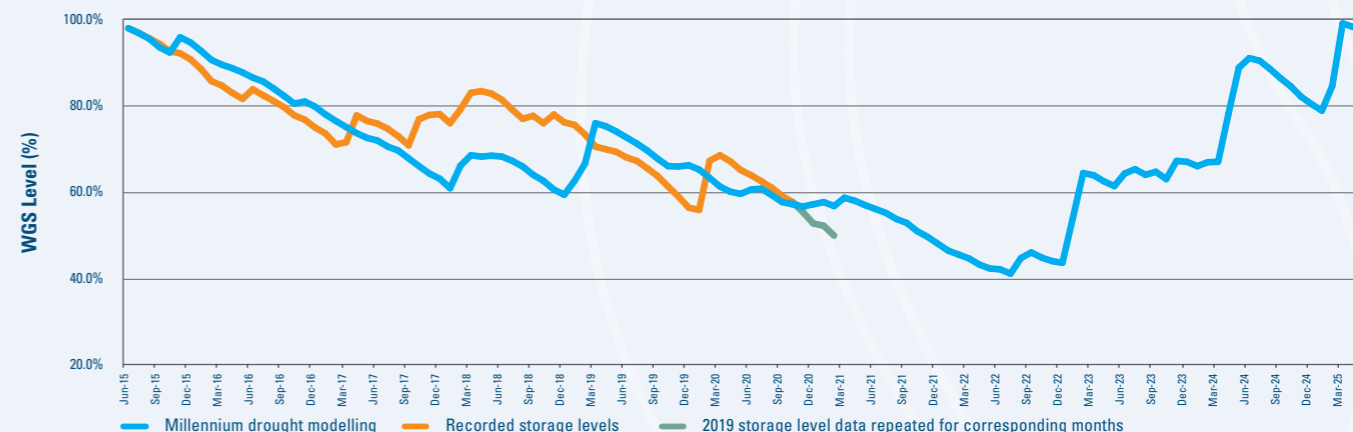
Water Grid storage

Water Grid storage actual drawdown to 27 November 2020, and projected drawdown.

The Water Grid drawdown graph shows historical storage data and a projected drawdown if the rate observed during the dry year of 2019 (not including any 2020 data) occurred in the corresponding months from October 2020 until March 2021.¹ The 2019 data is used as it was a particularly dry year – rainfall is usually higher in the summer period than it was in 2019. The recent rate of storage decline is due to low rainfall from April to October 2020. The millennium drought is shown to compare drawdowns over an extended drought period (see figure 1).

1. This projected drawdown does not account for differences in demand and supply conditions in 2020, such as continued operation of the Gold Coast Desalination Plant.

Figure 1: Water Grid storage drawdowns if dry conditions continue.



Soil moisture

The rise in deep soil moisture that occurred due to the Feb-March 2020 rainfall continues to slowly decrease and is now being to decline and currently at 44.3% full. There still needs to be significant rainfall events to see recovery and inflows into the catchment. (see figure 2).

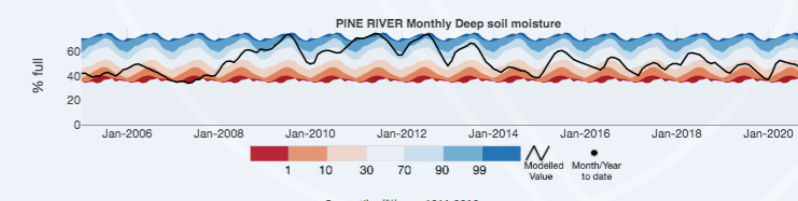
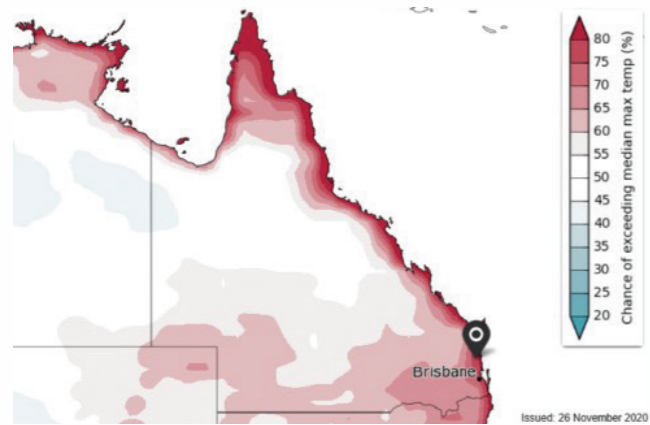


Figure 2: Brisbane River catchment monthly deep soil moisture – modelled estimate to November 2020 (source Bureau of Meteorology AWRA-L)

Weather outlook

Temperature

The BOM outlook is for a 65-80% probability of exceeding the 33.8°C median temperature for the Brisbane area from December. The past accuracy of these predictions has been classed as “high”

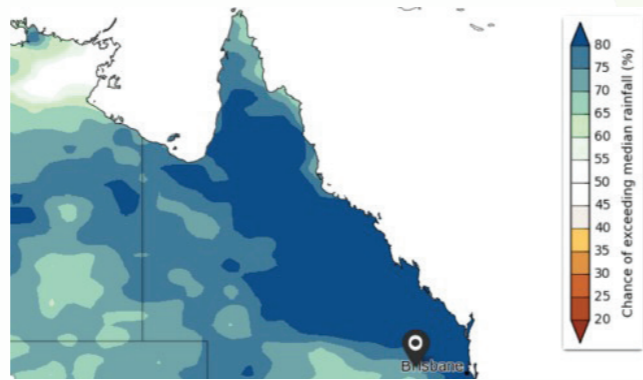


Issued: 26 November 2020

<http://www.bom.gov.au/climate/outlooks/#/temperature/maximum/median/monthly/0>

Rainfall

The BOM outlook for December to February is likely to be wetter than average for nearly all of Australia (greater than 80% chance along the Queensland coast). The outlook for South East Queensland is for 65-80% above median for this time of year (245mm). The past accuracy of these predictions has been classed as “likely”.



<http://www.bom.gov.au/climate/outlooks/#/rainfall/median/monthly/0>

Off-grid community drought status

The SEQ Water Grid allows us to move treated drinking water around the region. Off-grid communities are not connected to the SEQ Water Grid.

This table has been updated as at 27 November 2020.

- Low probability of reaching drought trigger in next 3 months
- Medium probability of reaching drought trigger in next 3 months
- High probability of reaching drought trigger in next 3 months

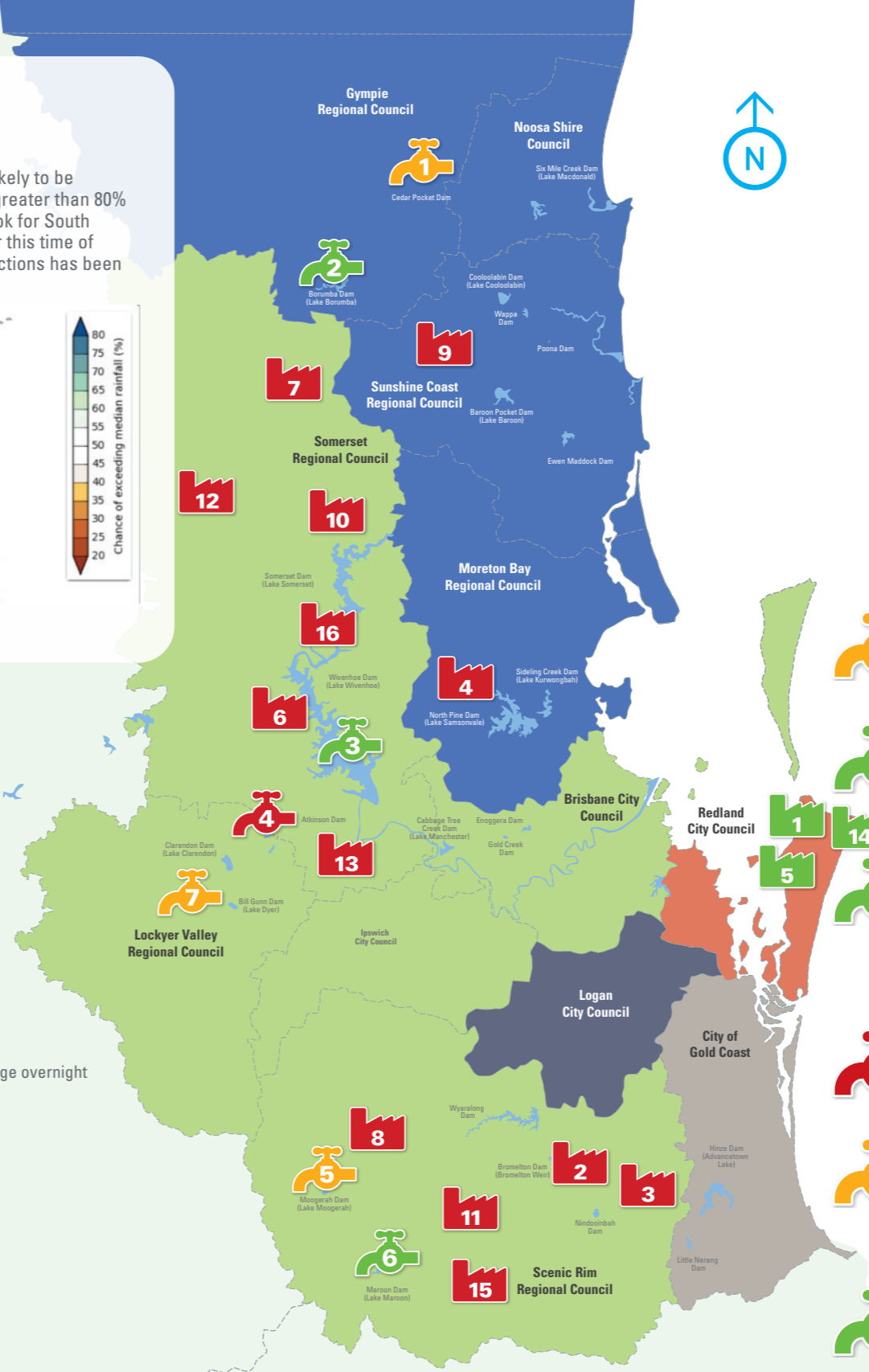
- 1 Amity Point**
Supply: North Stradbroke Island groundwater
Standing water level 16.51 m AHD**
Level 1: drought trigger at 15 m AHD
- 2 Beaudesert**
Supply: Maroon Dam 46.5%
Level 1: drought response in effect as of 19/10/20
Level 2: drought trigger at 25% dam level
- 3 Canungra**
Supply: Canungra Creek Stream flow ~0 ML/day
Level 3: drought response in effect as of 26/11/20
Level 4: drought trigger pumping pool no longer keeping up with demand
- 4 Dayboro**
Supply: groundwater/ carting
Well No. 1 standing level >RL 40.00 m AHD
Level 3: drought response in effect as of 6/10/20
Level 4: drought trigger when wells not meeting demand
- 5 Dunwich**
Supply: North Stradbroke Island groundwater
Standing water level 16.51 m AHD**
Level 1: drought trigger at 15 m AHD
- 6 Esk**
Supply: Wivenhoe Dam 40.5%
(Regional Water Grid Storages response)
Level 1: drought response in effect as of 15/09/20
Level 2: drought trigger at 50% Water Grid level
- 7 Jimna**
Supply: Yabba Creek Plant operating to meet demand
Level 1: drought response in effect as of 6/5/20
Level 3: drought trigger — when the Big Hole is 8m below normal operating level

- 8 Kalbar (Boonah, Aratula and Mount Alford)**
Supply: Moogerah Dam 17.4%
Level 2: drought response in effect as of 30/8/20
Level 3: drought trigger at 15% dam level
- 9 Kenilworth**
Supply: Wells near the Mary River
Bellbird Creek flow ~0 ML/day
Level 3: drought trigger when well doesn't recharge overnight
- 10 Kilcoy**
Supply: Somerset Dam 74%
(Regional Water Grid Storages response)
Level 1: drought response in effect as of 15/09/20
Level 2: drought trigger at 50% Water Grid level
- 11 Kooralbyn**
Supply: Maroon Dam 46.5%
Level 1: drought response in effect as of 19/10/20
Level 2: drought trigger at 25% dam level
- 12 Linville**
Supply: Brisbane River at Linville — 5.3 ML/day
Level 1: drought response in effect as of 15/09/20
Next drought trigger: Cart from Kilcoy when water treatment plan unable to meet demand
- 13 Lowood**
Supply: Wivenhoe Dam 40.5%
(Regional Water Grid Storages response)
Level 1: drought response in effect as of 15/09/20
Level 2: drought trigger at 50% Water Grid level
- 14 Point Lookout**
Supply: North Stradbroke Island groundwater
Standing water level 16.51 m AHD**
Level 1: Drought trigger at 15m AHD

- 15 Rathdowney**
Supply: Maroon Dam 46.5%
Level 1: drought response in effect as of 19/10/20
Level 2: drought trigger at 25% dam level
- 16 Somerset**
Supply: Somerset Dam 74% (Regional Water Grid Storages response)
Level 1: drought response in effect as of 15/09/20
Level 2: drought trigger at 50% Water Grid level

*Groundwater level in metres Australian Height Datum (AHD)

**The bore chosen has the most reliable and up-to-date data that can be continuously monitored.



Water Supply Scheme status

Seqwater supplies water to rural landholders and businesses that are licensed to take water from dams and waterways via Water Supply Schemes. The amount of water that can be extracted by licensed irrigators varies according to local water conditions. In times of drought or low flows, irrigation entitlements may be restricted or suspended.

This data has been updated as at 27 November 2020

- Full allocation
- Restricted
- Suspended

1 Cedar Pocket Water Supply Scheme
Cedar Pocket Dam currently 58.4% (down 2.7% from last month)
Announced allocations Medium Priority 84%

2 Mary Valley Water Supply Scheme
Borumba Dam currently 81.3% (down 1.3% from last month)
Announced allocations Medium Priority 100% (also supplies high priority)

3 Central Brisbane Water Supply Scheme
Wivenhoe Dam/Somerset Dam currently 50.7% (down 1.0% from last month)
Announced allocations Medium Priority 100% (also supplies high priority)
* Proposed amendments to water sharing rules in process.

4 Lower Lockyer Water Supply Scheme
Atkinson Dam currently 5.4% (no change from last month)
Announced allocations Medium Priority 0%

5 Warril Valley Water Supply Scheme
Moogerah Dam currently 17.4% (down 2.7% from last month)
Announced allocations Medium Priority 31% (also supplies high priority)
* Proposed amendments to water sharing rules in process.

6 Logan River Water Supply Scheme
Maroon Dam currently 46.5% (down 1.3% from last month)
Announced allocations Medium Priority 100% (also supplies high priority)

7 Central Lockyer Water Supply Scheme
Clarendon Dam & Bill Gunn Dam currently 2.9% (up 0.65% from last month)
Announced allocation (surface water) Morton Vale 0%, Medium Priority 0% (all zones)
Announced allocation (ground water) Medium Priority 80%, Low Priority 60%