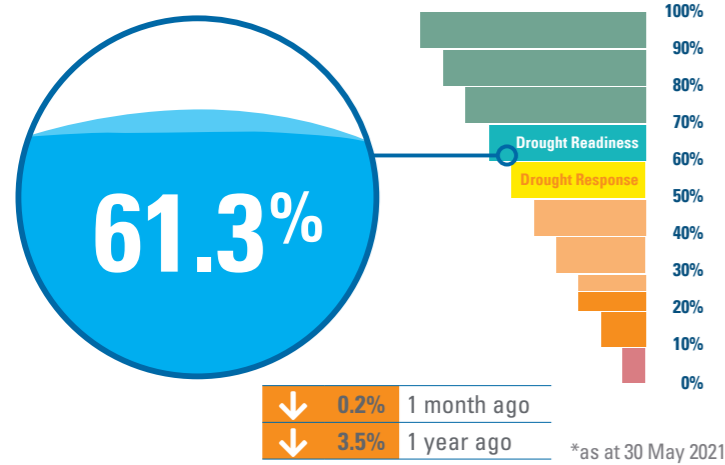
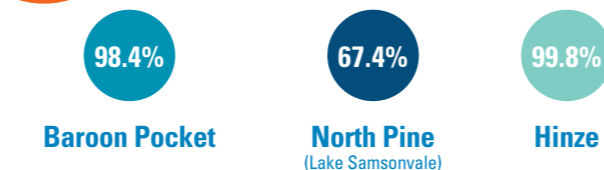
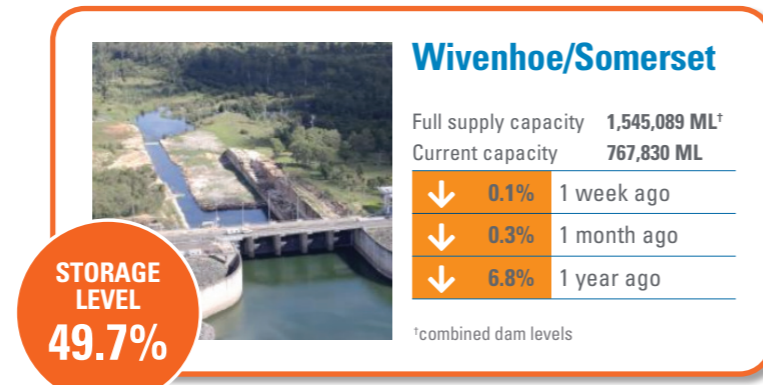


Overall Water Security Position



Wivenhoe and Somerset combined levels are at 49.7%. This is 6.8% lower than at a similar time last year.

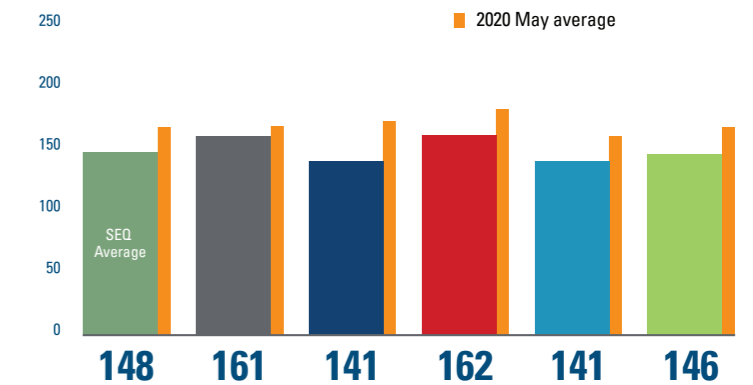


The Water Grid is operated to optimise the use of source water for the benefit of the whole of SEQ. The Southern Regional Water Pipeline continues to operate in a northerly direction, and the Northern Pipeline Interconnector is operating in a southerly direction.



Average Daily Residential Consumption

Although the combined grid level is nominally above 60%, Seqwater continues to advocate for water efficiency, and has campaigns in market to encourage residential demand reduction. The target of 150 Litres per Person per Day (LPD) is still considered to be appropriate due to the on-going drought conditions.



*Data range is 29/04/2021 to 26/05/2021 and 30/04/2020 to 27/05/2020



The average residential consumption rate for April was 148 LPD, meeting the regional residential consumption target.

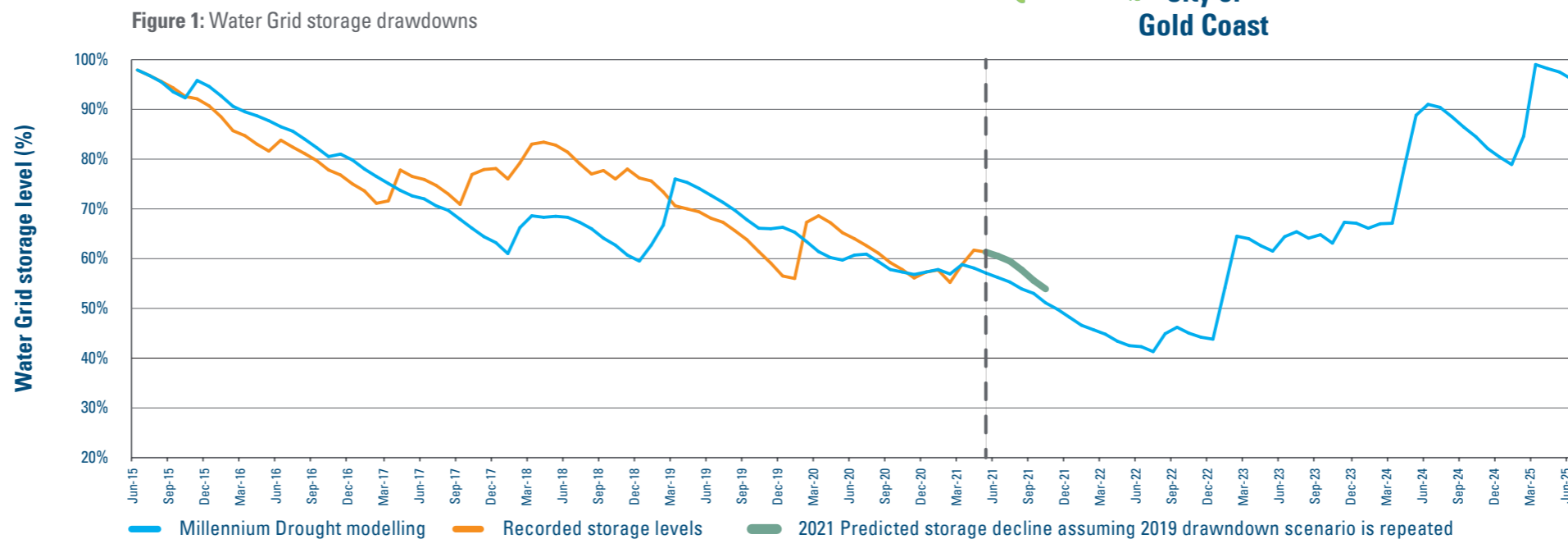
Drought is continuing across the SEQ region. The combined grid storage levels are only 61.3% and we are in the early stages of the dry season.

The current drought continues to be focussed on the central region – the combined storage levels of Wivenhoe and Somerset are at levels not seen since the Millennium drought.

Water Grid storage

Water Grid Storage actual drawdown to May 2021, and projected drawdown to October 2021.

The Water Grid drawdown graph shows historical storage data and a projected five month drawdown if the rate observed during the dry calendar year of 2019 was repeated.¹ The 2019 data is used because it was a particularly dry year. The Water Grid storage could reach 50% as soon as December 2021 if dry conditions, as observed in 2019, were to continue from June onwards. The Millennium Drought is shown with today's demand, current grid and drought response plan to compare drawdowns over an extended drought period (see Figure 1).



End of month storage decline assuming a repeat of the particularly dry 2019 year (2020 data not used):

Jun 21	60.5%
Jul 21	59.5%
Aug 21	57.7%
Sep 21	55.6%
Oct 21	53.9%

1. This projected drawdown does not account for differences in demand and supply conditions, such as continued operation of the Gold Coast Desalination Plant.

Weather outlook

Temperature

The Bureau of Meteorology (BOM) outlook is that there is a 60-65% chance of exceeding the median max temperature from June to August.



<http://www.bom.gov.au/climate/outlooks/#/temperature/maximum/median/seasonal/0>

Rainfall

The BOM outlook is that there is a 60-70% chance of exceeding the median rainfall from June to August.



<http://www.bom.gov.au/climate/outlooks/#/rainfall/median/seasonal/0>

Soil moisture

The rainfall forecast for South East Queensland is that there is only a 45-50% chance of their being above median rainfall for June. It is expected that significant inflows into any Seqwater dams are unlikely. The Brisbane river deep soil moisture is 36.34% for May with no significant change (2%) from last month.

Off-grid community drought status

The SEQ Water Grid allows us to move treated drinking water around the region. Off-grid communities are not connected to the SEQ Water Grid.

This table has been updated as at 30 May 2021.

Sunshine Coast Regional Council

1	Kenilworth	Wells near the Mary River Bellbird Creek flow ~ 60ML/day	●	●
---	------------	--	---	---

Moreton Bay Regional Council

2	Dayboro	Groundwater Well No 1 standing water level 41.32	●	●
---	---------	--	---	---

Somerset Regional Council

3	Jimna	Yabba Creek; plant operating to meet demand	●	●
---	-------	---	---	---

4	Linville	Brisbane River at Linville ~ 31 ML/day	●	●
---	----------	--	---	---

Redland City Council

5	Amity Point		●	●
---	-------------	--	---	---

6	Point Lookout	North Stradbroke Island Groundwater; standing water level 16.74 m AHD*	●	●
---	---------------	--	---	---

7	Dunwich		●	●
---	---------	--	---	---

Scenic Rim Regional Council

8	Kalbar (Boonah, Aratula and Mount Alford)	Moogerah Dam 42.3%	●	●
---	---	--------------------	---	---

9	Canungra	Canungra Creek; stream flow ~ 36.5 ML/day	●	●
---	----------	---	---	---

10	Beaudesert		●	●
----	------------	--	---	---

11	Kooralbyn	Maroon Dam 99.7%	●	●
----	-----------	------------------	---	---

12	Rathdowney		●	●
----	------------	--	---	---

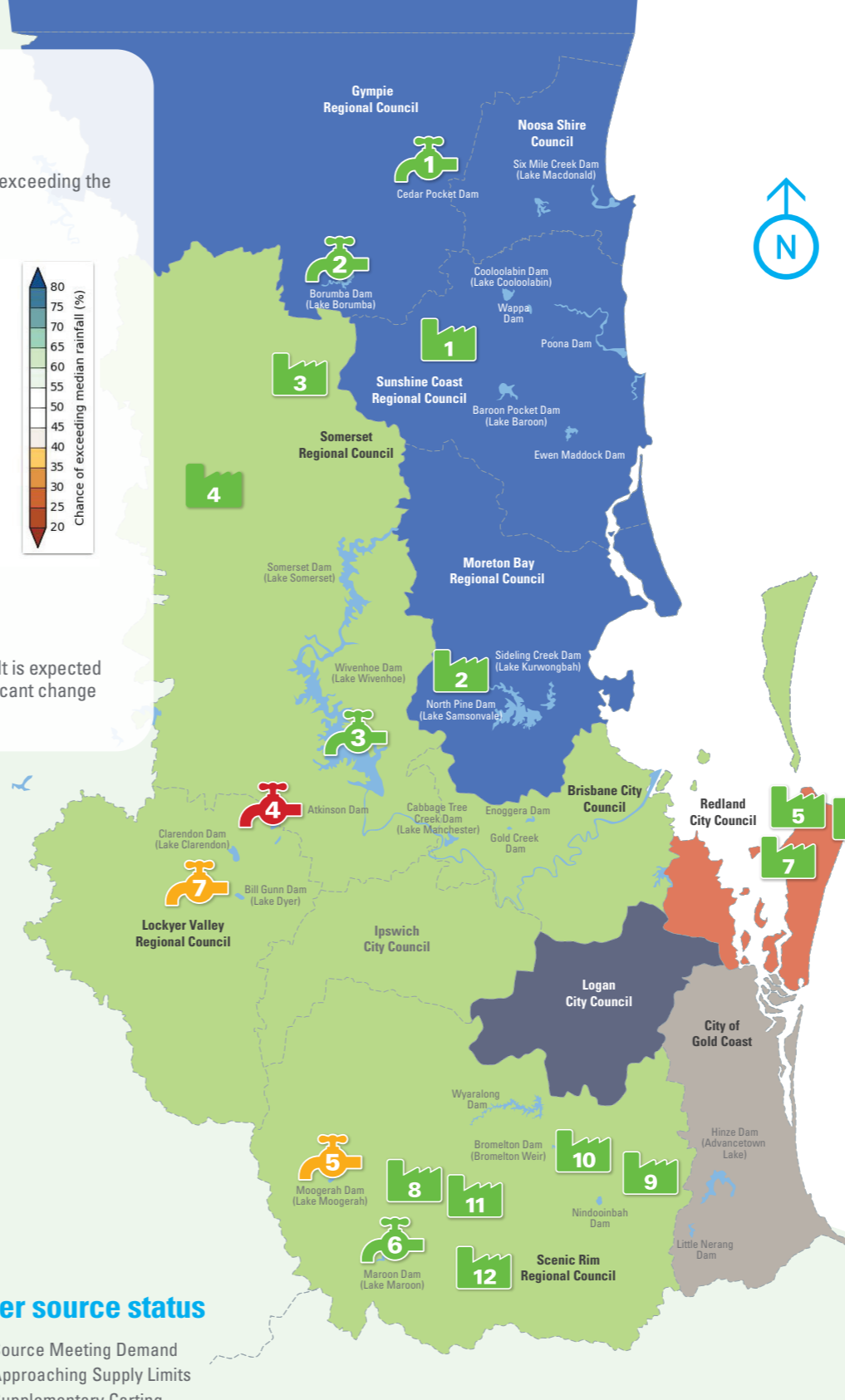
*The bore chosen has the most reliable and up-to-date data that can be continuously monitored.

Water source status

- Source Meeting Demand
- Approaching Supply Limits
- Supplementary Carting
- Full Carting

Restrictions status

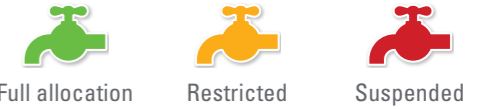
- Water efficiency awareness
- Voluntary conservation
- Medium level water restrictions
- High level water restrictions or greater



Water supply scheme status

Seqwater supplies water to rural landholders and businesses that are licensed to take water from dams and waterways via water supply schemes. The amount of water that can be extracted by licensed irrigators varies according to local water conditions. In times of drought or low flows, irrigation entitlements may be restricted or suspended.

This data has been updated as at 30 May 2021.



1 Cedar Pocket Water Supply Scheme
Cedar Pocket Dam currently 99.7% (up 5.7% from last month)
Announced allocations Medium Priority 100%

2 Mary Valley Water Supply Scheme
Borumba Dam currently 81.8% (up 1.8% from last month)
Announced allocations Medium Priority 100% (also supplies high priority)

3 Central Brisbane Water Supply Scheme
Wivenhoe Dam/Somerset Dam currently 49.8% (up 2.4% from last month)
Announced allocations Medium Priority 100% (also supplies high priority)

4 Lower Lockyer Water Supply Scheme
Atkinson Dam currently 4.6% (up 1.1% from last month)
Announced allocations Medium Priority 0%

5 Warrill Valley Water Supply Scheme
Moogerah Dam currently 42.1% (up 0.2% from last month)
Announced allocations Medium Priority 96% (also supplies high priority)

6 Logan River Water Supply Scheme
Maroon Dam currently 98.2% (up 8.3% from last month)
Announced allocations Medium Priority 100% (also supplies high priority)

7 Central Lockyer Water Supply Scheme
Clarendon Dam & Bill Gunn Dam currently 5% (up 6.3% from last month)
Announced allocation (surface water) Morton Vale 0%, Medium Priority 0% (all zones)
Announced allocation (ground water) Medium Priority 80%, Low Priority 60%