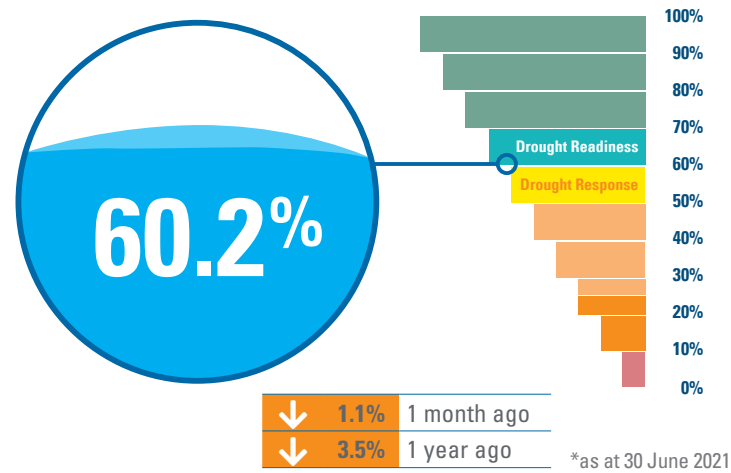


Overall Water Security Position



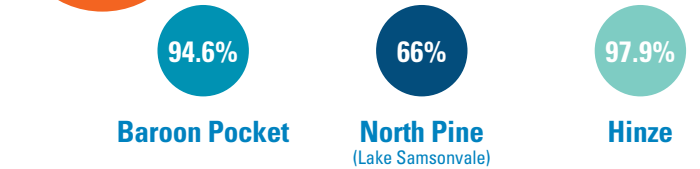
Wivenhoe and Somerset combined levels are at 49%. This is 6.75% lower than this time last year.

Wivenhoe/Somerset

Full supply capacity 1,545,089 ML[†]
Current capacity 756,357 ML

↑ 0.1%	1 week ago
↓ 0.74%	1 month ago
↓ 6.75%	1 year ago

*combined dam levels

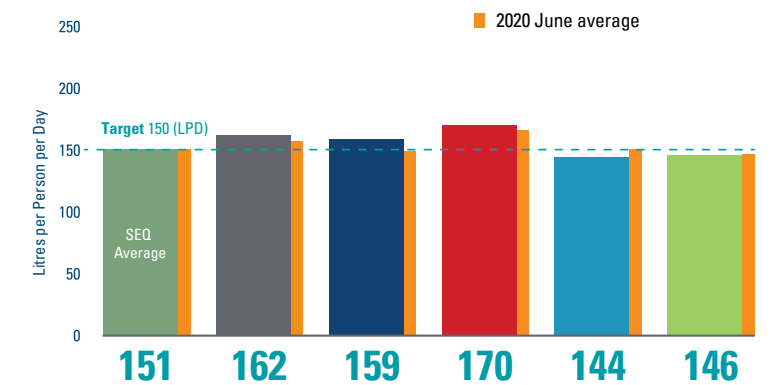


The Gold Coast Desalination Plant continues to operate to increase water supply in drought. The Southern Regional Water Pipeline continues to be maximised in a northerly direction, and the Northern Pipeline Interconnector is operating in a southerly direction.



Average Daily Residential Consumption

Although the Water Grid level is slightly above 60%, Seqwater continues to advocate for water efficiency, and has a campaign in market to encourage residential demand reduction. The target of 150 litres per person per day (LPD) is still considered to be appropriate due to ongoing drought conditions.



*Data range is 3/06/2021 to 30/06/2021 and 4/06/2020 - 1/07/2020

In June, South East Queensland residents used an average of 151 LPD, nearly meeting the 150 LPD water consumption target.

Drought is continuing across the South East Queensland (SEQ) region. The combined Water Grid storage levels are at 60.2% and we are in the dry season now.

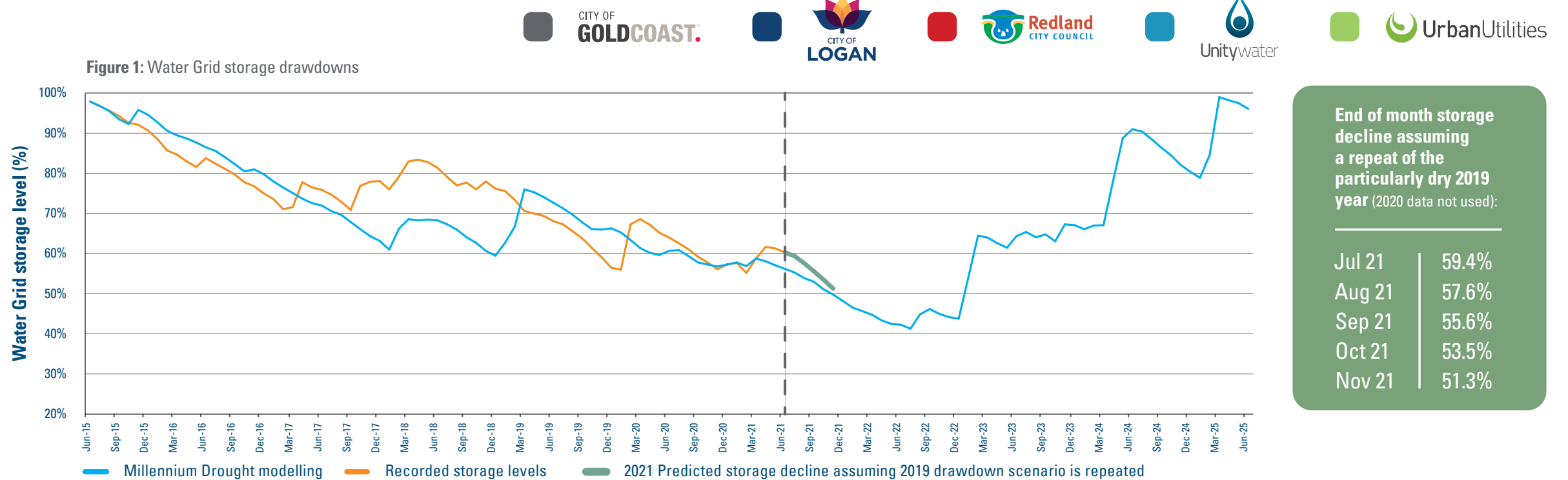
The current drought continues to be focussed on the central region – the combined storage levels of Wivenhoe and Somerset are at levels not seen since the Millennium Drought.

Water Grid storage

Water Grid storage actual drawdown to June 2021, with projected drawdown to November 2021.

The Water Grid drawdown graph shows historical storage data and a projected five month drawdown if the rate observed during the dry calendar year of 2019 was repeated.¹ The 2019 data is used because it was a particularly dry year. The Water Grid storage could reach 50% as soon as December 2021 if dry conditions, as observed in 2019, were to continue from July onwards. The Millennium Drought is shown with today's demand, current grid and drought response plan to compare drawdowns over an extended drought period (see Figure 1).

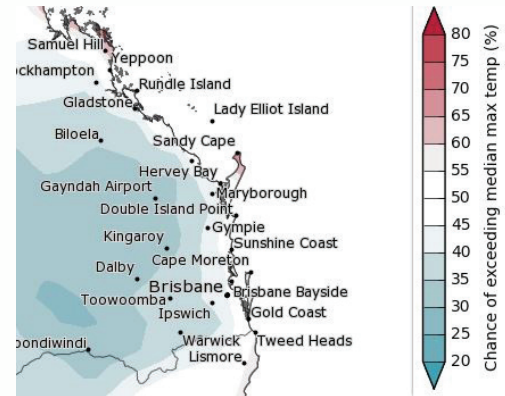
1. This projected drawdown does not account for differences in demand and supply conditions, such as continued operation of the Gold Coast Desalination Plant.



Weather outlook

Temperature

The Bureau of Meteorology (BOM) outlook is that there is a 35-45% chance of exceeding median max temperature from July to September 2021.



<http://www.bom.gov.au/climate/outlooks/#/temperature/maximum/median/seasonal/0>

Rainfall

The BOM outlook is that there is a 75-80% chance of exceeding median rainfall from July to September 2021.



<http://www.bom.gov.au/climate/outlooks/#/rainfall/median/seasonal/0>

Opportunity for grid level improvement

The Brisbane River deep soil moisture for June is 38.25% which is a very small 2% increase from last month. Despite rainfall outlook, the chances of significant improvement to Water Grid storage levels is slight. July to September is dry season and median rainfall is not significant.

Off-grid community drought status

The SEQ Water Grid allows us to move treated drinking water around the region. Off-grid communities are not connected to the SEQ Water Grid.

This table has been updated as at 30 June 2021.

Sunshine Coast Regional Council

1	Kenilworth	Wells near the Mary River Bellbird Creek flow ~ 60 ML/day	●	●
---	------------	---	---	---

Moreton Bay Regional Council

2	Dayboro	Groundwater Well No 1; standing water level 41.32 m AHD*	●	●
---	---------	--	---	---

Somerset Regional Council

3	Jimna	Yabba Creek; plant operating to meet demand	●	●
---	-------	---	---	---

4	Linville	Brisbane River at Linville ~ 31 ML/day	●	●
---	----------	--	---	---

Redland City Council

5	Amity Point		●	●
---	-------------	--	---	---

6	Point Lookout	North Stradbroke Island groundwater; standing water level 16.74 m AHD*	●	●
---	---------------	--	---	---

7	Dunwich		●	●
---	---------	--	---	---

Scenic Rim Regional Council

8	Kalbar (Boonah, Aratula and Mount Alford)	Moogerah Dam 42.3%	●	●
---	---	--------------------	---	---

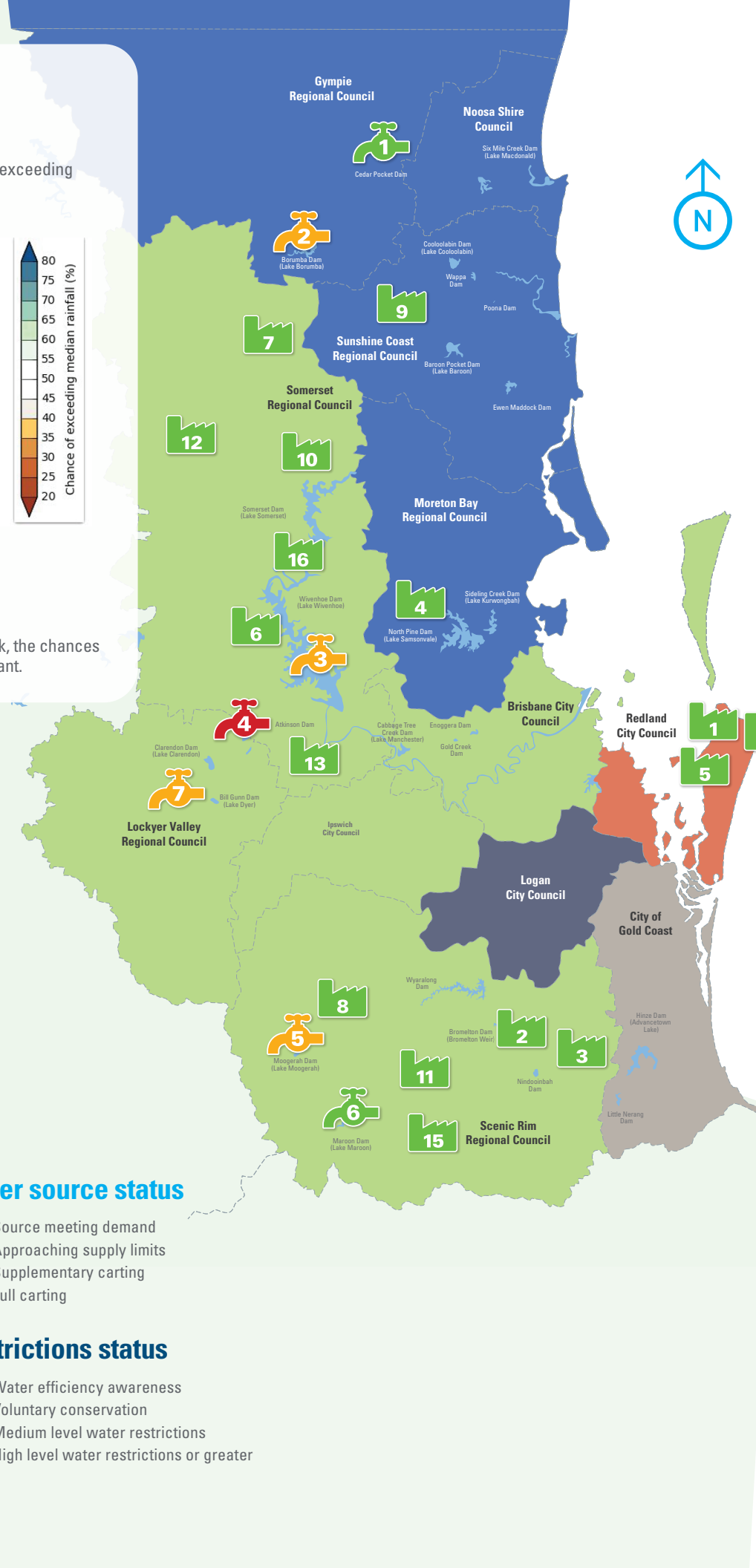
9	Canungra	Canungra Creek; stream flow ~ 36.5 ML/day	●	●
---	----------	---	---	---

10	Beaudesert		●	●
----	------------	--	---	---

11	Kooralbyn	Maroon Dam 99.7%	●	●
----	-----------	------------------	---	---

12	Rathdowney		●	●
----	------------	--	---	---

*The bore chosen has the most reliable and up-to-date data that can be continuously monitored.



Water source status
Restriction status

Water source status

- Source meeting demand
- Approaching supply limits
- Supplementary carting
- Full carting

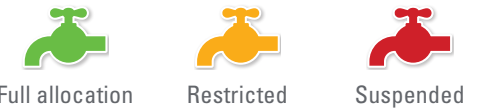
Restrictions status

- Water efficiency awareness
- Voluntary conservation
- Medium level water restrictions
- High level water restrictions or greater

Water supply scheme status

Seqwater supplies water to rural landholders and businesses that are licensed to take water from dams and waterways via water supply schemes. The amount of water that can be extracted by licensed irrigators varies according to local water conditions. In times of drought or low flows, irrigation entitlements may be restricted or suspended.

This data has been updated as at 30 June 2021.



1 Cedar Pocket Water Supply Scheme
Cedar Pocket Dam currently 95.3% (down 2.9% from last month)
Announced allocations Medium Priority 100%

2 Mary Valley Water Supply Scheme
Borumba Dam currently 79.9% (down 1% from last month)
Announced allocations Medium Priority 86% (also supplies high priority)

3 Central Brisbane Water Supply Scheme
Wivenhoe Dam/Somerset Dam currently 49% (down 0.7% from last month)
Announced allocations Medium Priority 70% (also supplies high priority)

4 Lower Lockyer Water Supply Scheme
Atkinson Dam currently 4.4% (down 0.1% from last month)
Announced allocations Medium Priority 0%

5 Warrill Valley Water Supply Scheme
Moogerah Dam currently 41.5% (down 0.9% from last month)
Announced allocations Medium Priority 77% (also supplies high priority)

6 Logan River Water Supply Scheme
Maroon Dam currently 99.3% (down 0.4% from last month)
Announced allocations Medium Priority 100% (also supplies high priority)

7 Central Lockyer Water Supply Scheme
Clarendon Dam & Bill Gunn Dam currently 4.9% (down 0.1% from last month)
Announced allocation (surface water) Morton Vale 0%, Medium Priority 0% (all zones)
Announced allocation (groundwater) Medium Priority 80%, Low Priority 60%