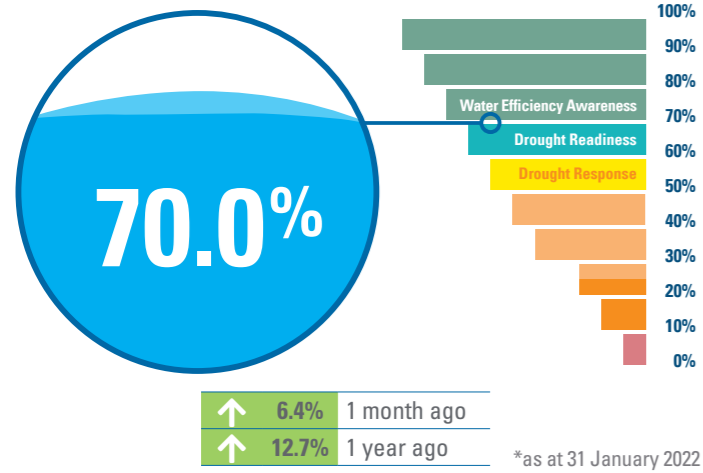
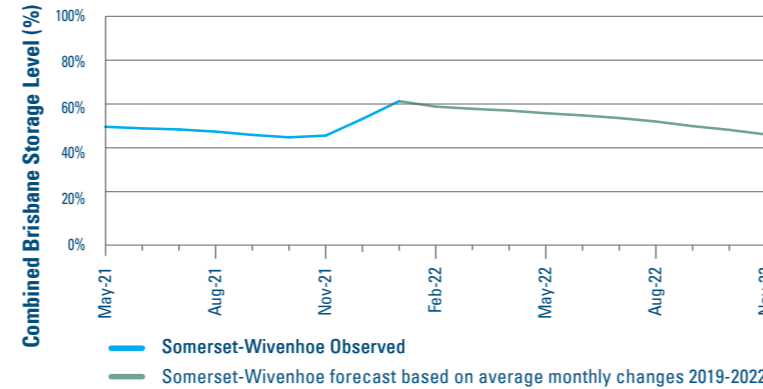


### Overall water security position



The South East Queensland (SEQ) Water Grid storage level has continued to increase this month, reaching 70% at the end of January, which means the region remains in Drought Readiness at this stage. Many of the region's storages remain at or close to full. SEQ's largest storages, Wivenhoe and Somerset Dams - which combined make up about 70% of the region's water supply (dams) - continue to be an area of interest, with a combined storage level of 61.8%.

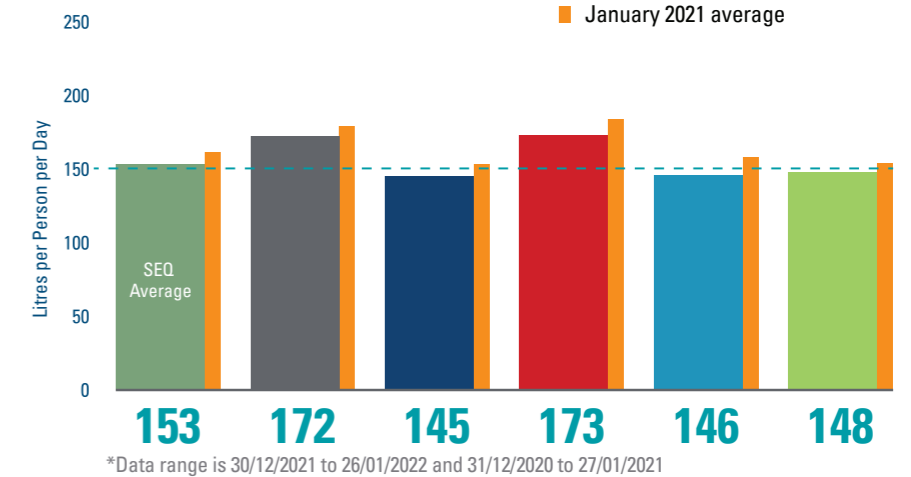
### Wivenhoe and Somerset future levels should recent conditions repeat



### Average daily residential consumption

Residential consumption has decreased slightly this month compared with last month: from 154 litres per person per day (LPD) in December to 153 LPD in January.

It is recognised that recent increases in the Water Grid storage level means that the likelihood of the Grid reaching 50% (which is the level at which water restrictions are imposed) in the near future is unlikely.



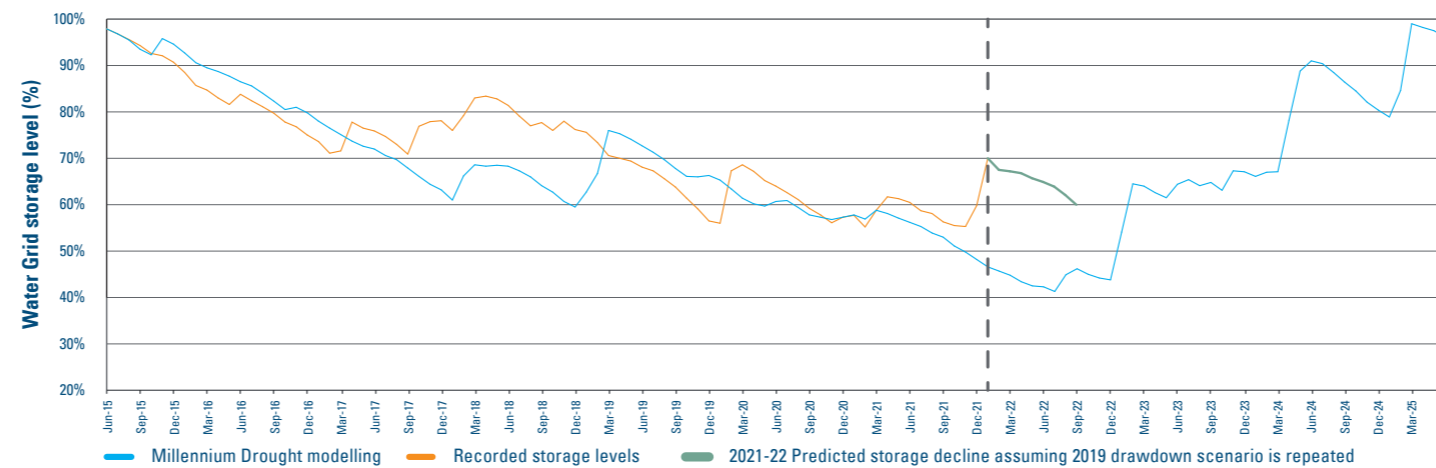
### Water Grid storage

#### Water Grid storage actual drawdown to the start of February 2022 with projected drawdown to 60% Grid level

The SEQ Water Grid drawdown graph below shows historical storage data and a projected drawdown to the next drought trigger (60%) if the rate observed during the dry calendar year of 2019 was repeated. Due to recent rainfall, drawdown projections have continued to improve and Grid levels are unlikely to drop below 60% (Drought Response) before late Spring 2022.

The 2019 data is used because it was a particularly dry year. It is noted that a repeat of these conditions is considered unlikely at this stage based on current outlook. The Millennium Drought is also shown on the following graph, adjusted with today's demand, current Grid and drought response plan to compare drawdowns over an extended drought period.

1. This projected drawdown does not account for adjustments to demand and supply conditions due to operation of the Gold Coast Desalination Plant



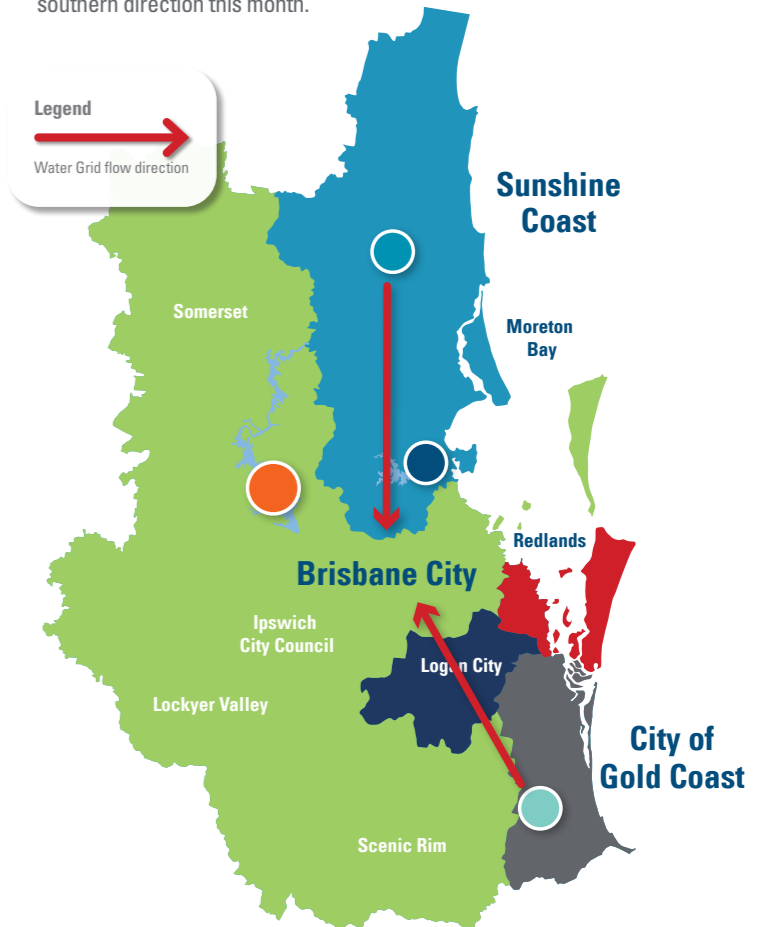
**End of month storage decline assuming a repeat of the particularly dry 2019 year (2020 data not used):**

Jan 22 - 70% | Feb 22 - 67.5% | Mar 22 - 67.2% | Apr 22 - 66.8% | May 22 - 65.7%

Jun 22 - 64.9% | Jul 22 - 63.9% | Aug 22 - 62.1% | Sep 22 - 60%

### Water Grid operation

The Southern Regional Water Pipeline has operated in the northern direction and the Northern Pipeline Interconnector has operated in the southern direction this month.



#### Wivenhoe/Somerset<sup>1</sup>

Full supply capacity **1,545,089 ML**  
Current capacity **955,602 ML**

↑ 0.9% 1 week ago  
↑ 8.4% 1 month ago  
↑ 14.4% 1 year ago

<sup>1</sup>combined dam levels

**STORAGE LEVEL**  
**61.8%**

**100.5%**

**Baroon Pocket**

**67.4%**

**North Pine**  
(Lake Samsonvale)

**102.4%**

**Hinze**

### Purified Recycled Water

Production of Purified Recycled Water has been reduced, as Grid storage levels are close to 70% and the region remains in Drought Readiness.

Work has continued to progress on the recommissioning of two additional trains at Luggage Point Advanced Water Treatment Plant.

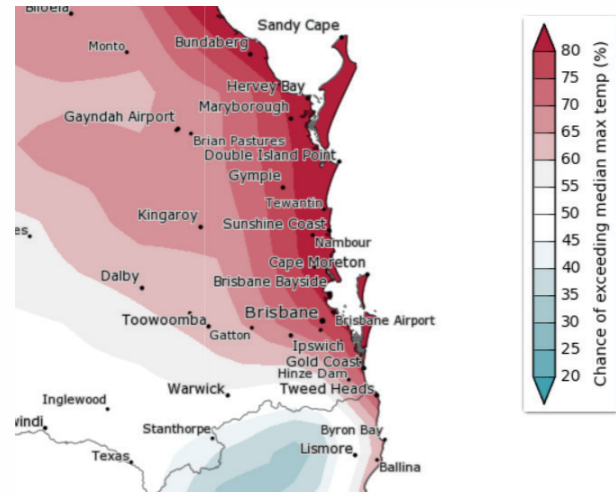
### Desalinated water production

The Gold Coast Desalination production has been reduced in response to increased Grid levels.

## Weather outlook

### Temperature

The Bureau of Meteorology (BOM) outlook is that there is a 50-80% chance of exceeding median maximum temperature February to April 2022.

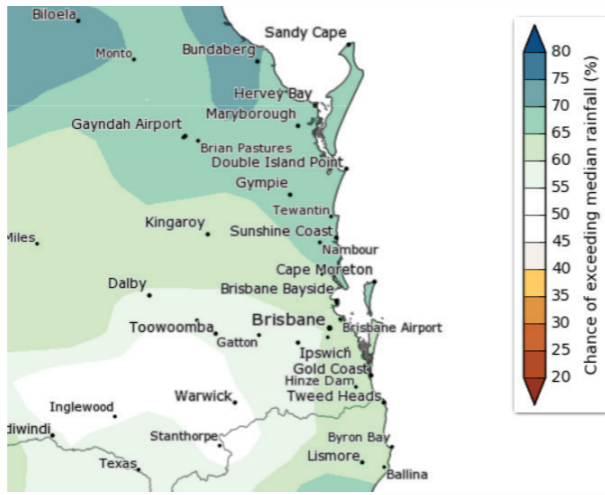


<http://www.bom.gov.au/climate/outlooks/#/temperature/maximum/median/seasonal/0>

\*as at 27 January 2022

### Rainfall

The BOM outlook is that there is a 55-70% chance of exceeding median rainfall February to April 2022.



<http://www.bom.gov.au/climate/outlooks/#/rainfall/median/seasonal/0>

## Off-grid community drought status

The SEQ Water Grid allows us to move treated drinking water around the region. Off-grid communities are not connected to the SEQ Water Grid. This data has been updated as at 31 January 2022.

### Sunshine Coast Regional Council

**1 Kenilworth** Mary River at Bellbird Creek flow: ~ 315.6 ML/day ● ●

### Moreton Bay Regional Council

**2 Dayboro** Groundwater Well No 1 standing water level: 41.3 m AHD ● ●

### Somerset Regional Council

**3 Jimna** Yabba Creek flow: water flowing over the Big Hole Weir ● ●

**4 Linville** Brisbane River at Linville: ~ 328.2 ML/day ● ●

### Redland City Council

**5 Amity Point** ● ●

**6 Point Lookout** North Stradbroke Island Groundwater standing water level (primary bore): 17.6 m AHD\* ● ●

**7 Dunwich** ● ●

### Scenic Rim Regional Council

**8 Kalbar** (Boonah, Aratula and Mount Alford) Moogerah Dam storage level: 80.4% ● ●

**9 Canungra** Canungra Creek flow: ~ 230.7 ML/day ● ●

**10 Beaudesert** ● ●

**11 Kooralbyn** Maroon Dam storage level: 100.1% ● ●

**12 Rathdowney** ● ●

### Water source status

- Source meeting demand
- Approaching water carting
- Supplementary carting
- Full carting

### Restrictions status

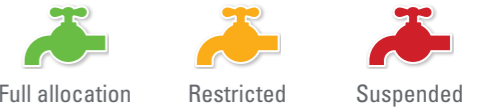
- Water efficiency awareness
- Voluntary conservation
- Medium level water restrictions
- High level water restrictions or greater

\*The bore chosen has the most reliable and up-to-date data that can be continuously monitored.

## Water supply scheme status

Seqwater supplies water to rural landholders and businesses that are licensed to take water from dams and waterways via water supply schemes. The amount of water that can be extracted by licensed irrigators varies according to local water conditions. In times of drought or low flows, irrigation entitlements may be restricted or suspended.

This data has been updated as at 31 January 2022



**1 Cedar Pocket Water Supply Scheme**  
Cedar Pocket Dam currently 101.6% (down 0.3% from last month)  
**Announced allocations** Medium Priority 100%

**2 Mary Valley Water Supply Scheme**  
Borumba Dam currently 100.3% (up 0.4% from last month)  
**Announced allocations** Medium Priority 100% (also supplies high priority)

**3 Central Brisbane Water Supply Scheme**  
Wivenhoe Dam/Somerset Dam currently 61.8% (up 8.4% from last month)  
**Announced allocations** Medium Priority 100% (also supplies high priority)

**4 Lower Lockyer Water Supply Scheme**  
Atkinson Dam currently 27.8% (up 1.8% from last month)  
**Announced allocations** Medium Priority 41%

**5 Warrill Valley Water Supply Scheme**  
Moogerah Dam currently 80.4% (up 3.1% from last month)  
**Announced allocations** Medium Priority 100% (also supplies high priority)

**6 Logan River Water Supply Scheme**  
Maroon Dam currently 100.1% (up 0.1% from last month)  
**Announced allocations** Medium Priority 100% (also supplies high priority)

**7 Central Lockyer Water Supply Scheme**  
Clarendon Dam & Bill Gunn Dam currently 28.9% (up 1.7% from last month)  
**Announced allocation (surface water)** Morton Vale 86%, Medium Priority Zones 2,3 & 5 - 37% and Zones 1 & 4 - 0%  
**Announced allocation (groundwater)** Medium Priority 80%, Low Priority 60%

