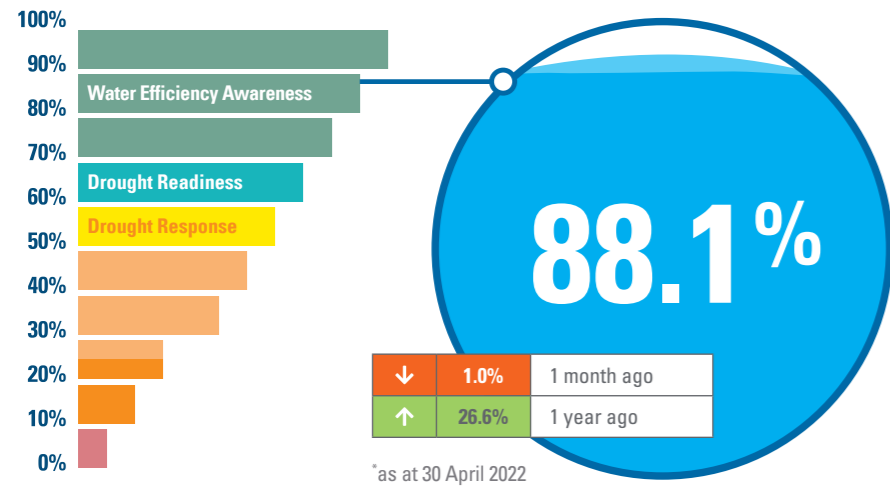



### Overall water security position



After significant rainfall events filled storages earlier this year, the South East Queensland (SEQ) Water Grid storage level has remained at or near Full Supply Level this month, which is a relatively secure position as we near the traditional dry season (typically April to October). Most storages throughout the region continue to operate at or near their Full Supply Level. Although some storages are operating at a reduced Full Supply Level (see below for further information), modelling projections suggest a very low risk of drought for the SEQ Water Grid in 2022.



#### Wivenhoe/Somerset<sup>1</sup>

Wivenhoe and Somerset Dams are SEQ's largest storages, and combined make up about 70% of the region's water supply (dams).

**Full supply capacity:** 1,545,089 ML  
**Current capacity:** 1,347,934 ML

↓	0.1%	1 week ago
↓	0.4%	1 month ago
↑	37.3%	1 year ago

<sup>1</sup> combined dam levels

**STORAGE LEVEL**  
**87.2%**

### Water Grid storage

The SEQ Water Grid has remained at a relatively constant level in April at 88.1%. Many of the region's storages were filled during the major flood events of February and the continued above average rainfall during March. Despite only near-average to below average rainfall across the region in April, the already wet catchments have meant that storages have remained at or slightly above their Full Supply Levels.

With winter rainfall (June to August) considered likely to be above median for much of the region, the outlook for Grid levels in the coming months looks relatively positive and a rapid decline in levels is unlikely.

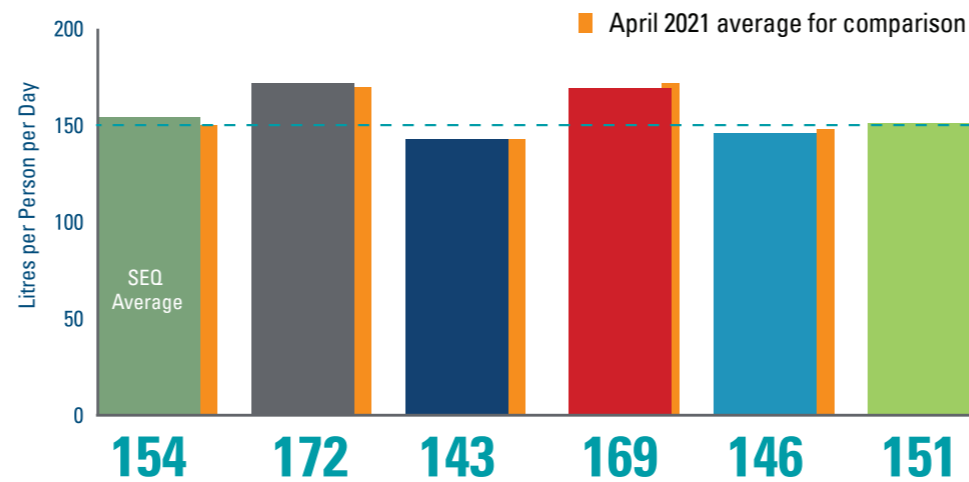
#### Did you know?

Prior to the extreme rain events experienced throughout the region at the end of **February 2022**, SEQ's largest storages, Wivenhoe and Somerset Dams, were at their lowest combined level since the Millennium Drought.

### Average daily residential consumption

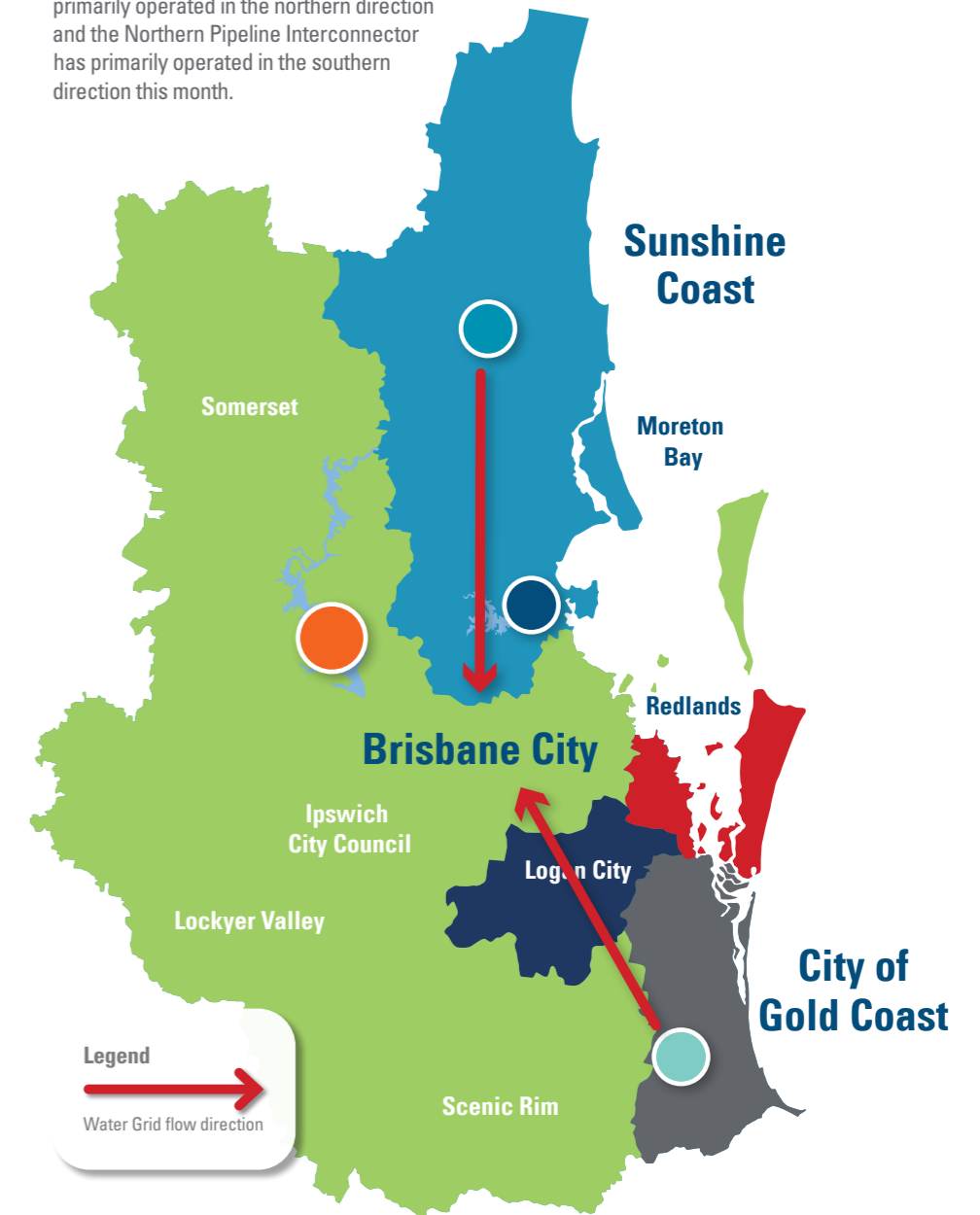
Average residential consumption in April was 154 litres per person per day (LPD). This is a decrease on March consumption which was 159 LPD.

<sup>1</sup>Date range is 31/03/2022 to 27/04/2022 and 1/04/2021 to 28/04/2021



### Water Grid operation

The Southern Regional Water Pipeline has primarily operated in the northern direction and the Northern Pipeline Interconnector has primarily operated in the southern direction this month.



### Purified Recycled Water

Seqwater is continuing to provide up to 6 ML/d of Purified Recycled Water to industrial customers.

### Desalinated water production

The Gold Coast Desalination Plant production has been reduced in response to increased Grid levels, but continues to supply a nominal volume to customers.

100%

67.1%

100%

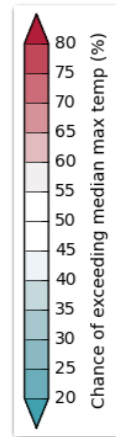
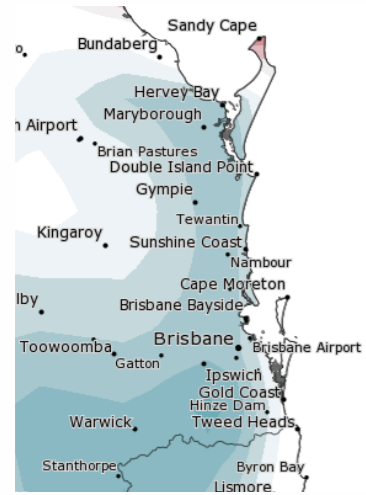
**Baroon Pocket**      **North Pine** (Lake Samsonvale)      **Hinze**

Somerset, Wivenhoe and North Pine Dams are currently operating at a reduced Full Supply Level for dam safety reasons. The reduced Full Supply Level for these dams is 80%, 90% and 68% respectively. As such, the current Full Supply Level for the SEQ Water Grid is limited to 88.1% (rather than 100%).

## Weather outlook

### Temperature

The Bureau of Meteorology (BOM) outlook is that there is a 30-45% chance of exceeding median maximum temperature from May to July 2022.

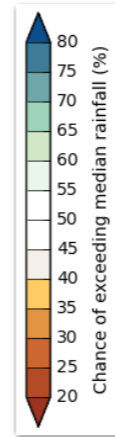
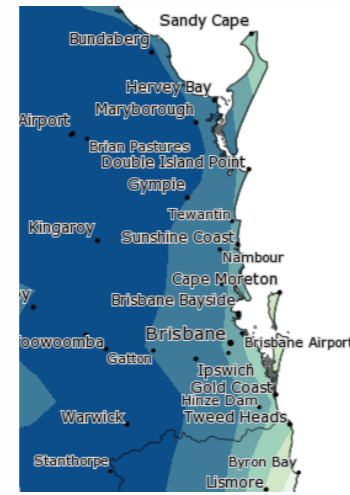


<http://www.bom.gov.au/climate/outlooks/#/temperature/maximum/median/seasonal/0>

\*as at 28 April 2022

### Rainfall

The BOM outlook is that there is a 65-80% chance of exceeding median rainfall from May to July 2022. Long-term predictions suggest the next two years will be drier than the preceding year.



<http://www.bom.gov.au/climate/outlooks/#/rainfall/median/seasonal/0>

## Off-grid community drought status

The SEQ Water Grid allows us to move treated drinking water around the region. Off-grid communities are not connected to the SEQ Water Grid.

\*as at 30 April 2022

### Sunshine Coast Regional Council

**1 Kenilworth** Mary River at Bellbird Creek flow: ~724 ML/day ● ●

### Moreton Bay Regional Council

**2 Dayboro** Groundwater Well No 1 standing water level: 41.28 m AHD ● ●

### Somerset Regional Council

**3 Jimna** Yabba Creek flow: water flowing over the Big Hole Weir ● ●

**4 Linville** Brisbane River at Linville: Unknown (Last reading at 26/02/2022 - no further data currently available) ● ●

### Redland City Council

**5 Amity Point** ● ●

**6 Point Lookout** North Stradbroke Island Groundwater standing water level (primary bore): 18.05 m AHD ● ●

**7 Dunwich** ● ●

### Scenic Rim Regional Council

**8 Kalbar** (Boonah, Aratula and Mount Alford) Moogerah Dam storage level: 100% ● ●

**9 Canungra** Canungra Creek flow: ~ 146 ML/day ● ●

**10 Beaudesert** ● ●

**11 Kooralbyn** Maroon Dam storage level: 100% ● ●

**12 Rathdowney** ● ●

Water source status  
Restriction status

### Water source status

- Source meeting demand
- Approaching water carting
- Supplementary carting
- Full carting

### Restrictions status

- Water efficiency awareness
- Voluntary conservation
- Medium level water restrictions
- High level water restrictions or greater



## Water supply scheme status

Seqwater supplies water to rural landholders and businesses that are licensed to take water from dams and waterways via water supply schemes. The amount of water that can be extracted by licensed irrigators varies according to local water conditions. In times of drought or low flows, irrigation entitlements may be restricted or suspended.

\*as at 30 April 2022



Full allocation



Restricted



Suspended



### Cedar Pocket Water Supply Scheme

Cedar Pocket Dam currently 100% (Down 0.9% from last month)

Announced Allocations Medium Priority 100%



### Mary Valley Water Supply Scheme

Borumba Dam currently 100% (Down 1.4% from last month)

Announced Allocations Medium Priority 100% (also supplies high priority)



### Central Brisbane Water Supply Scheme

Wivenhoe Dam/Somerset Dam currently 87.7% (Same as last month)

Announced Allocations Medium Priority 100% (also supplies high priority)



### Lower Lockyer Water Supply Scheme

Atkinson Dam currently 99.7% (Down 0.3% from last month)

Announced Allocations Medium Priority 100%



### Warrill Valley Water Supply Scheme

Moogerah Dam currently 100% (Down 3.1% from last month)

Announced Allocations Medium Priority 100% (also supplies high priority)



### Logan River Water Supply Scheme

Maroon Dam currently 100% (Down 1.3% from last month)

Announced Allocations Medium Priority 100% (also supplies high priority)



### Central Lockyer Water Supply Scheme

Clarendon Dam & Bill Gunn Dam currently 84.7% (Up 18.6% from last month)

Announced allocation (surface water) Morton Vale 100%, Medium Priority Zones 87%

Announced allocation (groundwater) Medium Priority 100%, Low Priority 100%