

WSPP

Water Service Providers' Partnership



Linville Drought Response Plan

Document number: PLN-00467

Version Date: 21 March 2023





Contents

Introduction	3
About Linville	4
Drought Response Plan: Linville	5

Introduction

Urban Utilities and Seqwater work together to supply reliable, affordable and sustainable drinking water to consumers in SEQ, both now and in the future.

Seqwater owns and operates the region’s bulk water supply system including dams and weirs; water treatment plants; and climate resilient water sources. The interconnected SEQ Water Grid forms the majority of the bulk water supply system and enables us to move drinking water to where it is needed. While most South East Queenslanders are serviced by the Water Grid, we also supply drinking water to about 55,000 people living in off-grid communities – rural towns and island communities that are not connected to the Grid, but form part of the bulk water supply system.

Each of these off-grid communities have their own local water source and management of this water is supported by a Drought Response Plan, which outlines how water will be managed when local supply becomes limited, to ensure levels of service are met.

This Drought Response plan outlines drought response measures that will be put in place to respond to drought.

Urban Utilities is the “Water Retailer” for Linville, taking water from the bulk water supply system and delivering it to households and businesses in Linville as well as the rest of the Somerset, Brisbane, Ipswich, Lockyer Valley and Scenic Rim local authority areas.

About Linville

Linville is located within the Somerset Regional Council (SRC) local government area. The primary water source for the town is an alluvial aquifer in the upper Brisbane River catchment (refer Figure 1).

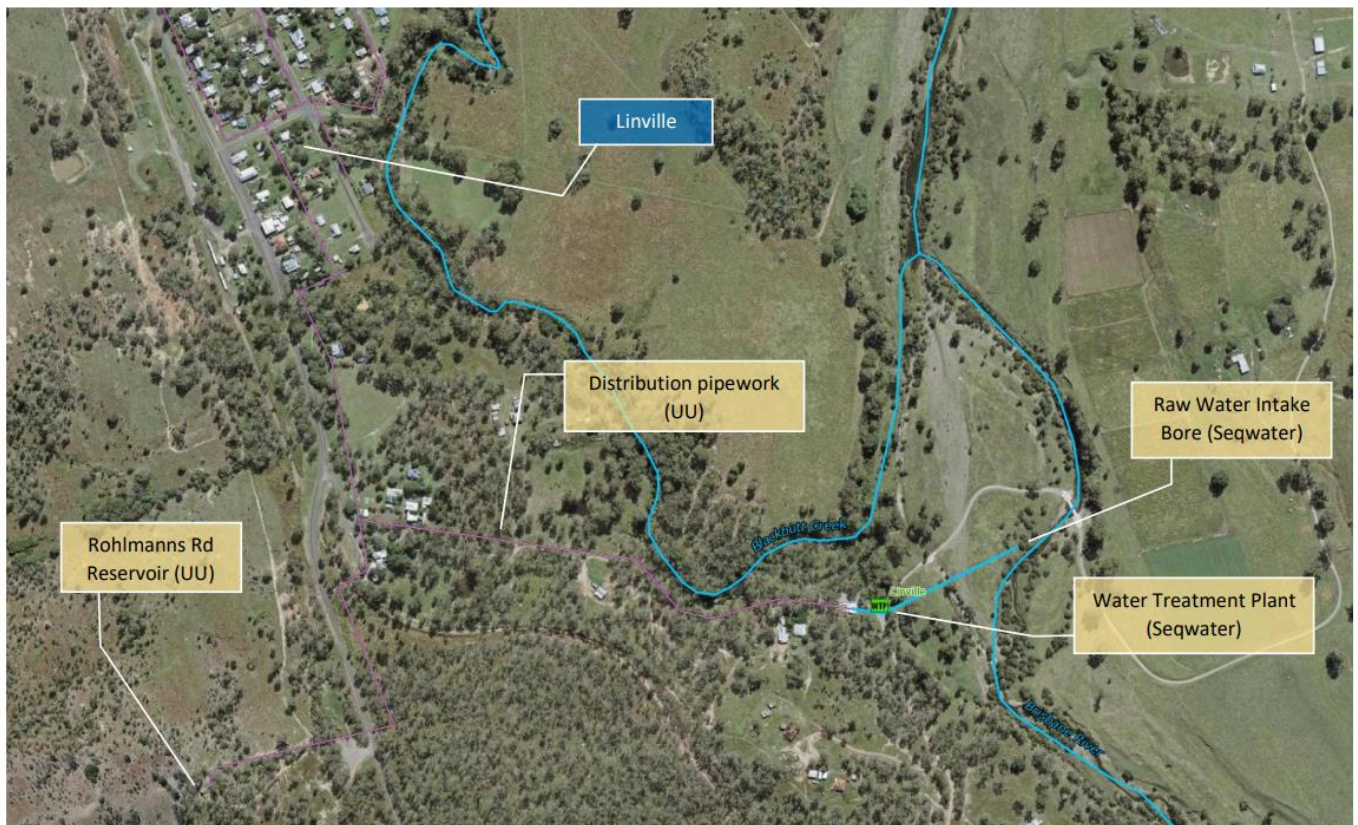


Figure 1 Linville Water Supply Overview

Source: Seqwater Spatial

The local water supply is part of the Upper Brisbane River Water catchment, contained within the Moreton Water Plan Area. The Moreton Water Plan is administered by the Department of Regional Development, Manufacturing and Water (DRDMW), which is responsible for managing water resources across Queensland, including providing sustainable water allocation for the environment, agriculture, industries and population centers. There is no entitlement associated with Linville Water Treatment Plant, instead, Seqwater receives 35 ML/annum for the town water supply under a historical Order in Council (OIC). Seqwater cannot divert more than this allocated volume in any year. All other entitlements (including irrigators) that fall under the Water Resource Plan are not included in this Drought Response Plan. DRDMW is responsible for imposing restrictions on these users during drought.

Seqwater treats water from its OIC using a local Water Treatment Plant, to supply drinking water to the township of Linville, including a hydrant/standpipe. The Treatment Plant has a capacity of 0.32 ML/day and caters to current and future demand within the planning horizon. The Linville township water supply is considered a run-of-river system, and although there is a wet well which facilitates pumping to the water treatment plant, there is currently no storage for source water upstream of the treatment plant. As such, the full Treatment Plant capacity can only be realised when there is sufficient water available in the wet well.

When there is insufficient raw water available for the Treatment Plant to run at the required flow rate, or at all, there is facility available at the Treatment Plant for treated water to be tankered in. The volume of water that tankers can supply to the town is based on potable water demand and the availability and capability of required assets, and can be limited by potential impact to local traffic and the community.

Urban Utilities is responsible for delivering the treated water to the homes and businesses in Linville.

Drought Response Plan: Linville

Water supplies in drought will be managed through a combination of demand management and supplementing supplies with water carting. Specific triggers have been identified for drought response actions (Figure 2 and Table 1) to provide clarity for planning. The actions listed are not intended to be limiting – additional actions may be required for drought response. Seqwater will monitor flow and advise Urban Utilities when each trigger is reached.

Demand Management

This Drought Response Plan outlines measures necessary to sustain water supplies to the local community in times of drought, due to a shortage in their local water supply availability.

From this perspective, it is not necessary for the local community to be subject to restrictions that apply to regional drought triggers, however, Urban Utilities will put water restrictions in place if Seqwater has to cart water into Linville to maintain the supply.

Contingency Supply

Seqwater commits to tankering up to 50 kL/d when the local supply is not available, and Urban Utilities commits to managing local demand within this volume.

The water carters engaged by Seqwater during drought will source water from Kilcoy or the Water Grid and will follow a traffic management plan designed to limit the impact to traffic through the town of Linville.

Future Drought Response Plans for Linville

The Drought Response Plan has been developed based on currently available infrastructure. The Drought Response Plan will be updated every 5 years or if there are changes to the local infrastructure.

Linville Drought Response

BRISBANE RIVER FLOW
AT LINVILLE GAUGE

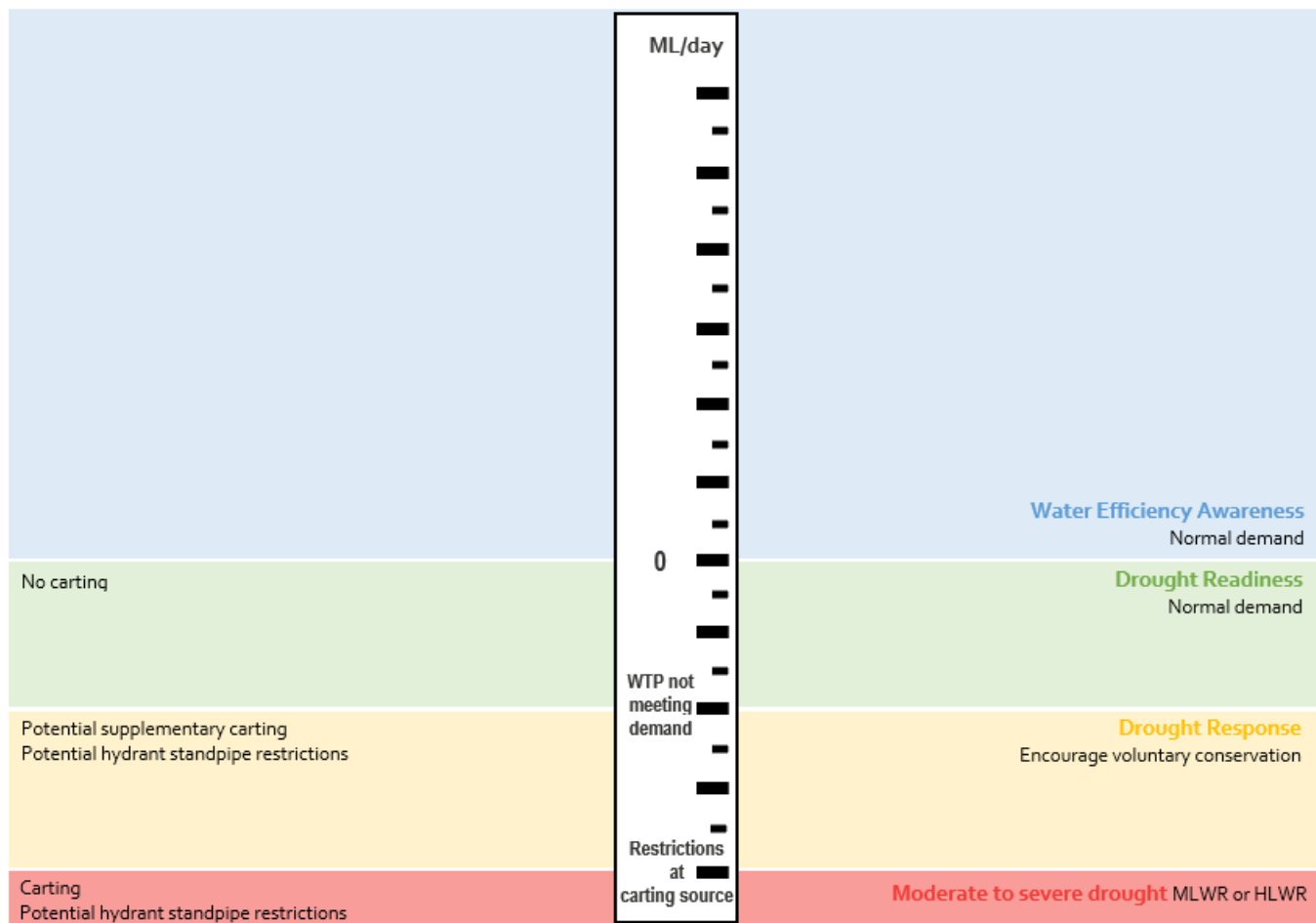


Figure 2 Linville Drought Response Overview

TFS = Tanker Filling Station, MLWR = Medium Level Water Restrictions, HLWR = High Level Water Restrictions

Linville Drought Response

Table 1 Linville Summary Drought Response Plan

Level	Trigger (local supply level)	Residential demand management	Water carting volume	Tanker Filling Station (TFS) / hydrant standpipe access	Monitoring local supply availability	Note
Responsibility	Set by Seqwater	Urban Utilities	Seqwater	Urban Utilities	Seqwater	
Normal operations	Stream flow measured at Linville gauging station #143007A above 0 ML/day	Normal demand			Monthly	
1 – Drought readiness	Stream flow measured at Linville gauging station #143007A at 0 ML/day	Normal demand	Confirm carting source. Potential viable locations are from Kilcoy WTP or the water grid		Weekly	
2 – Drought response	WTP not meeting demand	Communications encouraging voluntary conservation	Potential supplementary carting	Potential hydrant standpipe restrictions	Weekly	
3 – Moderate to severe drought	Water carting source is under water restrictions	Medium to High Level Water Restrictions Encourage 140-120 L/p/d	Carting up to 50 kL/d	As above	Daily	

Note: Drought exit will be staged as water supply achieves the level of each preceding drought trigger level, with removal of actions at each level as appropriate.