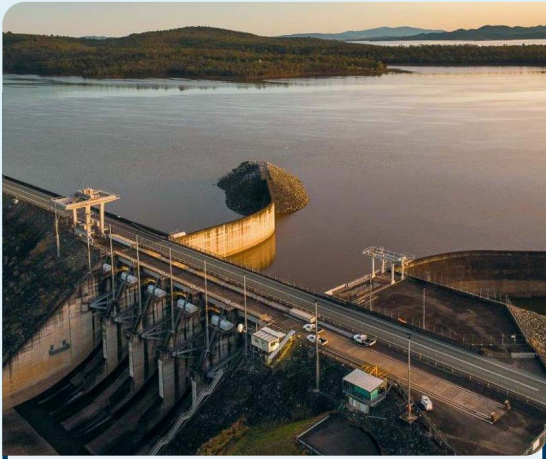


# Community Notification

## WIVENHOE DAM IMPROVEMENT PROJECT

JUNE  
2024



### Geotechnical investigations

As part of the Options Analysis phase, geotechnical investigations will be conducted to better understand the ground conditions (soil and rock).

The geotechnical investigations are expected to progressively occur around Wivenhoe Dam from June to late 2024, between 6.30am and 6.30pm on weekdays, weather and ground conditions permitting. Some weekend work may be required.

Residents and visitors can expect to see an increased number of workers around the lake and local area, as well as:

- Traffic control – residents may experience short-term traffic disruptions. Please follow the directions of traffic controllers and signage onsite.
- Minor noise, possible dust and vibration may be experienced.
- Access – visitors to park locations may be limited at times for public safety.

### Wivenhoe Dam Improvement Project

Wivenhoe Dam is one of several dams to be upgraded as part of Seqwater's Dam Improvement Program.

Wivenhoe Dam is the main drinking water source for South East Queensland and plays an important role in the SEQ Water Grid. The dam's continued performance and safety is critical to the region.

The Wivenhoe Dam Improvement Project will ensure the dam continues to operate safely in extreme weather events and provides water security for years to come.

### Project phase: Options Analysis

Seqwater is currently undertaking the Options Analysis phase of the project. During this phase, Seqwater will consider a wide range of improvement options for Wivenhoe Dam.

Major dam upgrades have complex design and approval requirements and can take years to plan and complete.

The Wivenhoe Dam Improvement Project will ensure the best option to meet project objectives, regulatory requirements and deliver value for money.

As Somerset and Wivenhoe Dams operate as one system for both water supply and flood mitigation, the outcomes of the Somerset Dam Improvement Project will inform planning considerations for Wivenhoe.

### Did you know?

**Wivenhoe Dam is South East Queensland's largest water storage and is the main supply of water for the greater Brisbane and Ipswich areas. Wivenhoe Dam was built on the Brisbane River in 1984 for the dual purpose of providing a safe and reliable water supply for the region and flood mitigation.**

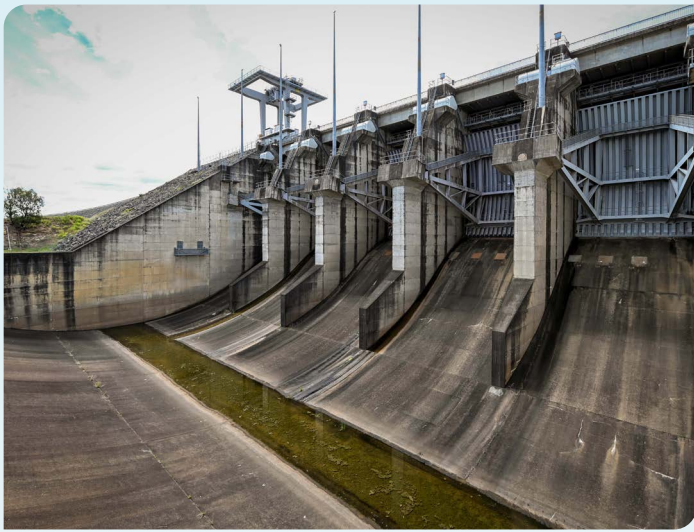
Options  
Analysis

Business  
Case

Design and  
Procurement

Construction

Completed



## Dam Improvement Program

Dams are long-life infrastructure, and our understanding of risk changes over time, particularly when we consider climate change impacts and more extreme weather events.

The methodologies and data used to estimate extreme weather and flood risks have changed significantly since some Queensland dams were built, and safety risks and engineering standards have improved.

Through Seqwater's Dam Improvement Program we're investing in our region's dams to comply with the latest safety standards (in line with regulatory requirements) to continue to function safely during extreme weather events and ensure they provide water security for years to come.

## Keeping you informed

As the project progresses, Seqwater is committed to keeping the local community informed. To sign up for Wivenhoe Dam Improvement Project updates, please visit the project web page or email [projectinfo@seqwater.com.au](mailto:projectinfo@seqwater.com.au) and ask to be added to the project update list.

Thank you for your understanding and patience while these important technical surveys are completed.

For more information on the project, please contact:

**e** [projectinfo@seqwater.com.au](mailto:projectinfo@seqwater.com.au)

**p** 07 3432 7000 (during business hours)

**w** [seqwater.com.au/project/wivenhoe-dam-improvement-project](http://seqwater.com.au/project/wivenhoe-dam-improvement-project)

Non-English speakers call 131 450 and ask for Seqwater on 07 3035 5500.

If you have a hearing or speech impairment, contact us through the National Relay Service and give the number 07 3035 5500 a call or visit [www.relayservice.gov.au](http://www.relayservice.gov.au) for more information.

