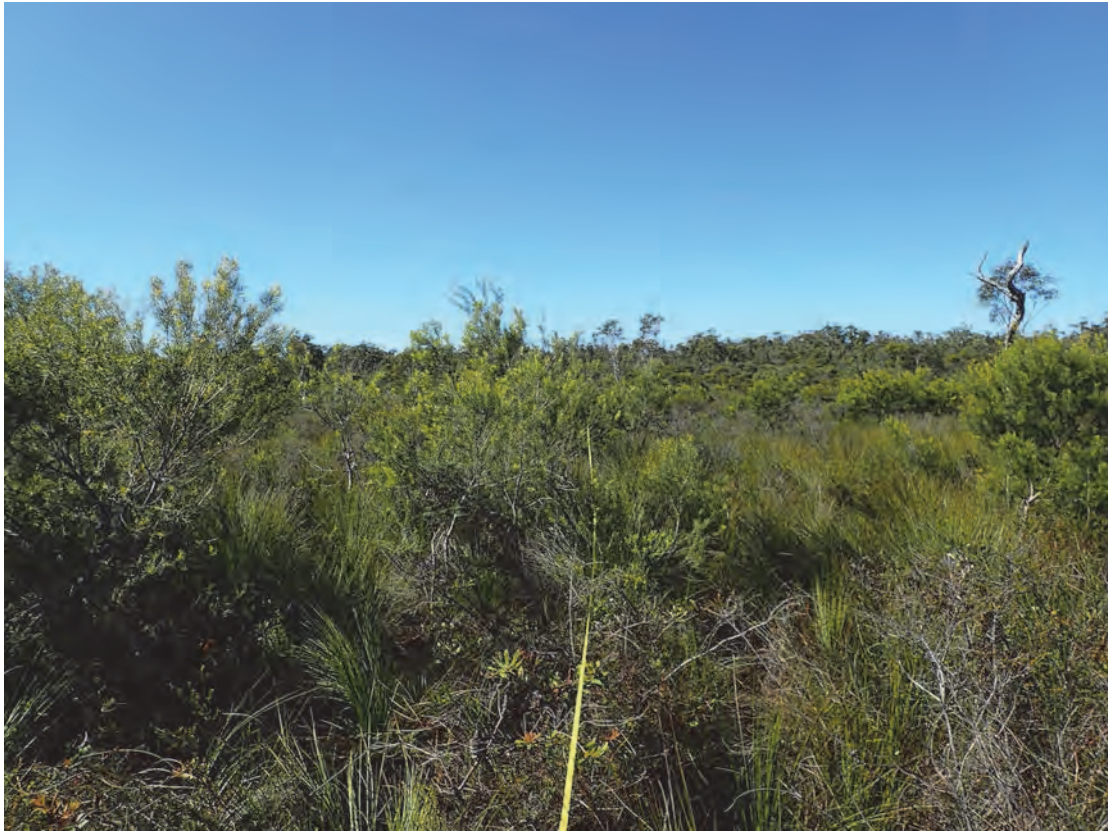
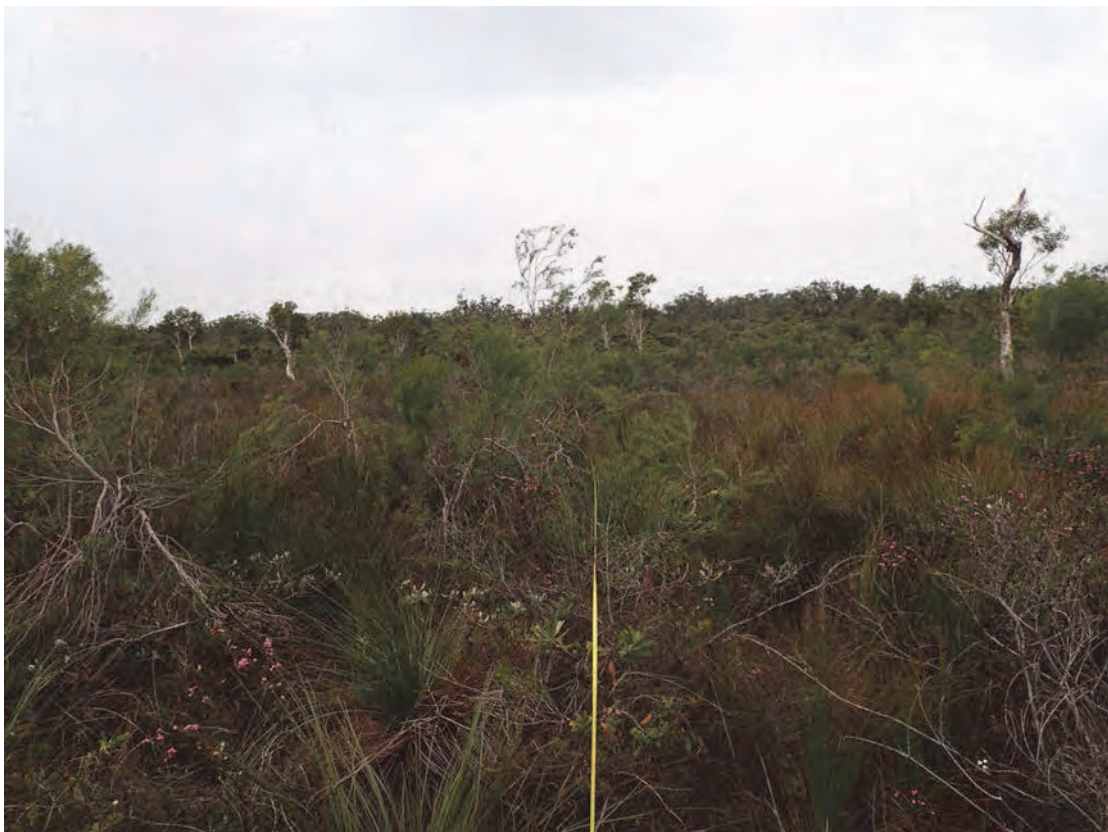


Plot 6a – Centre to Start; April 2017 (Above) and October 2017 (Below).





Plot 6a – Centre to End: April 2017 (Above) and October 2017 (Below).





Plot 6a – Centre Left: April 2017 (Above) and October 2017 (Below).





Plot 6a – Centre to Right: April 2017 (Above) and October 2017 (Below).



Survey Locality 6b

Date of Assessment: 28.04.2017; 13.10.2017.

Plot Size: 50 m linear transect (Canopy Cover); 50 x 4m transect for S2 shrubs >0.5m; 10 x 1m x 1m quadrats for Ground Cover.

Location (Plot Centreline): Start -26.9852/ 153.1541529; Centre -26.985 / 153.1543768 Finish - 26.9849 / 153.1545859

Structure: Heath

Shrub Cover** – Canopy Intercept (>50cm) (summarised 50 m transect)

April 2017

Intercept (m)	Species	Shrubs > 1m		Shrubs >0.5 to <1m	
		Intercept S1	Height (M)	Intercept S1	Height (M)
1.9 – 2.9	<i>Banksia oblongifolia</i>			0.5	0.8
3.6 – 4.4	<i>Banksia oblongifolia</i>			0.8	0.8
8.0 – 9.0	<i>Persoonia virgata</i>	1	2		
16.2 – 17.6	<i>Banksia oblongifolia</i>			1.5	0.6
17.6 – 18.8	<i>Persoonia virgata</i>	1.2	1.6		
21.7 – 22.4	<i>Boronia falcifolia</i>			0.7	0.7
25 – 26	<i>Persoonia virgata</i> <i>Persoonia virgata</i>	1	1.5		
27.2 – 27.8	<i>Persoonia virgata</i>	0.6	1.2		
29.4 – 30.8	<i>Persoonia virgata</i>	0.9	2		
36.6 – 37.8	<i>Banksia oblongifolia</i>	1.2	1		
37.8 – 38.1	<i>Dillwynia sp.</i>			0.3	0.9
38.6 – 40.7	<i>Banksia oblongifolia</i>	1.1	2.2		
42.6 – 42.9	<i>Leptospermum liversidgei</i>			0.3	0.6
Total Cover		7.0		4.1	
Average Height			1.64		0.73

*** Tree not included in cover calculation

October 2017

Intercept (m)	Species	Shrubs > 1m		Shrubs >0.5 to <1m	
		Intercept S1	Height (M)	Intercept S1	Height (M)
1.5 – 2.7	<i>Banksia oblongifolia</i>			1.2	0.8
3.5 – 4.3	<i>Banksia oblongifolia</i>			0.8	0.6
8.0 – 9.0	<i>Persoonia virgata</i>	1	2		
13.2 – 13.6	<i>Boronia Falcifolia</i>	0.8	1		
16.2 – 16.7	<i>Boronia Falcifolia</i>	0.8	1		
17.2 – 18.7	<i>Persoonia virgata</i>	1.5	1.5		
20.8 – 21.2	<i>Boronia Falcifolia</i>			0.4	0.6
21.2 - 22	<i>Baeckia frutescens</i>			0.8	0.7
24.8 – 25.8	<i>Persoonia virgata</i>	1	1.5		
26.7 – 28	<i>Persoonia virgata</i>	1.3	1.2		
29.4 - 31	<i>Persoonia virgata</i>	1.6	2		
30.9 – 31.2	<i>Boronia Falcifolia</i>			0.3	0.8
37.1 – 38	<i>Banksia oblongifolia</i>	0.9	1		
38.9 – 39.5	<i>Persoonia virgata</i>	0.6	1.6		
40.2 – 40.8	<i>Persoonia virgata</i>	0.6	1.2		
42.1 – 42.5	<i>Boronia Falcifolia</i>			0.4	0.8
43.7 – 44.1	<i>Leptospermum liversedgeii</i>	0.4	1		
Total Cover		10.5		3.9	

Intercept (m)	Species	Shrubs > 1m		Shrubs >0.5 to <1m	
		Intercept S1	Height (M)	Intercept S1	Height (M)
<i>Average Height</i>			1.4		0.71

Stem Counts (50 x 4) – Shrubs > 0.5m

Species	50 m x 4 m Stems (50x4m) April 2016	50 m x 4 m Stems (50x4m) September 2016
	S2	
<i>Persoonia virgata</i>	32	32
<i>Banksia aemula</i>	1	1
<i>Banksia oblongifolia</i>	11	13
<i>Leptospermum liversidgei</i>	14	13
<i>Boronia falcifolia</i>	16	23
<i>Leucopogon leptospermoides</i>	3	3
<i>Baeckea frutescens</i>	9	9
<i>Dilwynnia floribunda</i>	3	
<i>Epacris pulchella</i>	2	1
<i>Epacris obtusifolia</i>		1
<i>Phyllota phyllocooides</i>		
<i>Leptospermum polgalifolium</i>	2	2
<i>Aotus lanigera</i>	1	1
Totals	94	99

Ground Cover %- 1 x 1m Sub-plots

April 2017

Ground Cover Type	Species	Q1	Q2	Q3	Q4	Q5	Q6	Q7	Q8	Q9	Q10	Mean April 16
Native perennial grass / sedges	<i>Caustis recurvata</i>	5	5									19.95
	<i>Sporodanthus interruptus</i>	10	40	20	40	35	10	5	5	5	5	
	<i>Lomandra sp. (divided)</i>	5	5			1	2.5					
	<i>Lomandra elongata</i>					1						
Native forbs	<i>Pimelea liniifolia</i>			2.5	2.5							1.7

Ground Cover Type	Species	Q1	Q2	Q3	Q4	Q5	Q6	Q7	Q8	Q9	Q10	Mean April 16
and other spp.	<i>Burchardia umbellata</i>										0.5	
	<i>Cassytha glabella</i>		0.5									
	<i>Hibbertia salicifolia</i>							2.5	5	1		
	<i>Stackhousia nuda</i>		1.5					0.5				
	<i>Selaginella uliginosa</i>					0.5						
Native shrubs ,<1m	<i>Boronia falcifolia</i>					2.5	10	2.5	2.5	2.5	2.5	10.5
	<i>Baেকে imbricata</i>						0.5					
	<i>Persoonia virgata</i>											
	<i>Leucopogon leptospermoides</i>	10		0.5	5	2.5						
	<i>Banksia oblongifolia</i>		15									
	<i>Strangea linearis</i>			2.5								
	<i>Leptospermum liversidgei</i>							15				
	<i>Leptospermum semibaccatum</i>		1	10	2.5	2.5						
	<i>Sprengelia sprengelioids</i>								5			
	<i>Dilwynnia floribunda</i>			0.5							10	
Grass Tree	<i>Xanthorrhoea fulva</i>	50	10	30	20	2.5	10	60	40	60	40	32.25
Cryptogams												
Bare Ground												
Exotic Shrubs												
Leaf litter		20	22	34	30	52.5	67	14.5	42.5	31.5	42	35.6
Timber (>/= 10cm)												
Total		100	100	100	100	100	100	100	100	100	100	100%

October 2017

Ground Cover Type	Species	Q1	Q2	Q3	Q4	Q5	Q6	Q7	Q8	Q9	Q10	Mean April 16	Mean Sept. 16
Native perennial grass / sedges	<i>Caustis recurvata</i>	5	5	2.5		2.5	2.5					19.95	25.2
	<i>Sporodanthus interruptus</i>	35	25	50	25	20	20	5	10	5	5		
	<i>Lomandra sp. (divided)</i>	10	15	1			5						

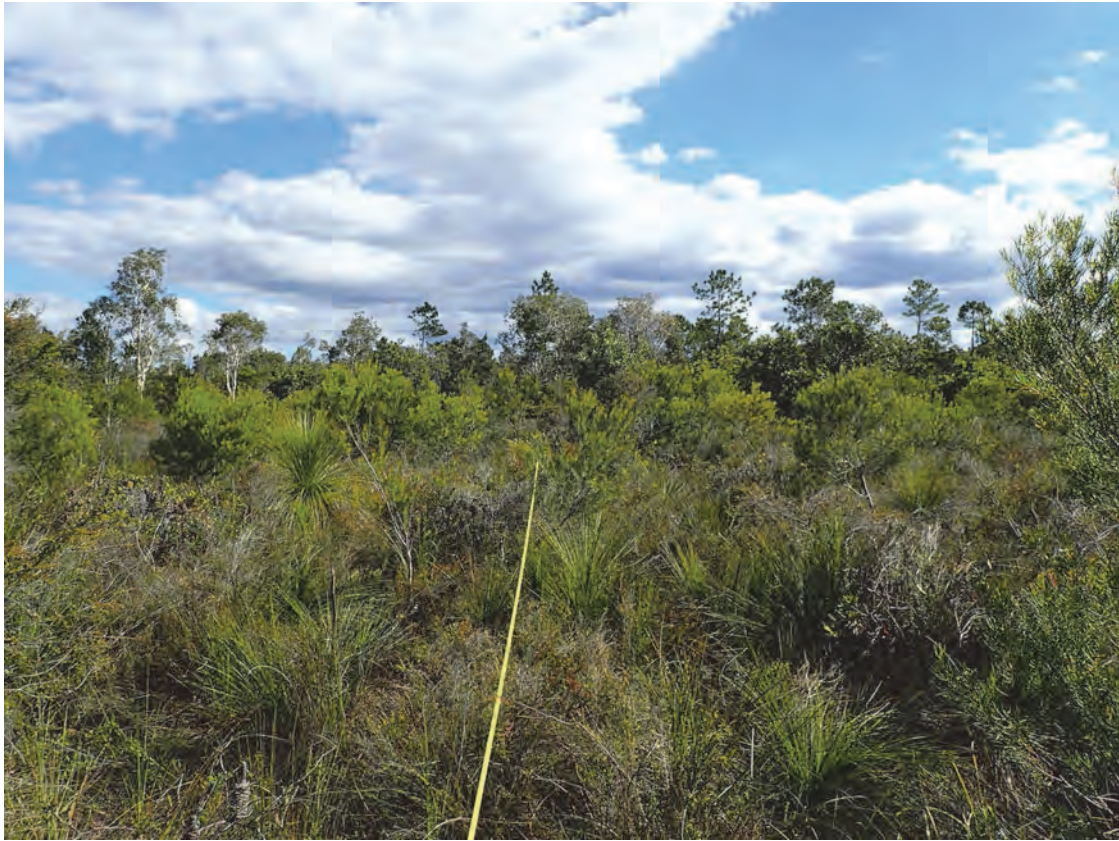
Ground Cover Type	Species	Q1	Q2	Q3	Q4	Q5	Q6	Q7	Q8	Q9	Q10	Mean April 16	Mean Sept. 16
	<i>Lomandra elongata</i>			2.5		1							
Native forbs and other spp.	<i>Pimelea liniifolia</i>			1	0.5							1.7	0.95
	<i>Cassytha glabella</i>		1										
	<i>Hibbertia salicifolia</i>							1	2.5	2.5			
	<i>Burchardia umbellata</i>									1			
Native shrubs <1m	<i>Boronia falcifolia</i>					5	5	1			5	10.5	11.65
	<i>Baeckea imbricata</i>					1	2.5		0.5		1		
	<i>Baeckea frutescens</i>				5			0.5	5	1	10		
	<i>Persoonia virgata</i>			10									
	<i>Leucopogon leptospermoides</i>		10		5	2.5	2.5						
	<i>Banksia oblongifolia</i>	15	10										
	<i>Strangea linearis</i>				2.5			2.5					
	<i>Epacris pulchella</i>					1							
	<i>Leptospermum semibaccatum</i>					2.5							
	<i>Sprengelia sprengeloides</i>								2.5				
	<i>Epacris oblongifolia</i>										1		
	<i>Dilwynnia floribunda</i>				2.5	1		2.5	1				
Grass Tree	<i>Xanthorrhoea fulva</i>	15	10		25	2.5	2.5	50	30	60	30	32.25	22.5
Cryptogams													
Bare Ground													
Exotic Shrubs													
Leaf litter		20	24	33	34.5	61	60	37.5	48.5	30.5	48	35.6	39.7
Timber (>= 10cm)													
Total		100	100	100	100	100	100	100	100	100	100	100%	100%

Additional Species: *Selaginella uliginosa*, *Pultenaea paleacea.*, *Aotus lanigera*, *Olax retusa*, *Ochrosperma lineare*, *Connospermum taxifolium*,

Structural / Floristic Summary

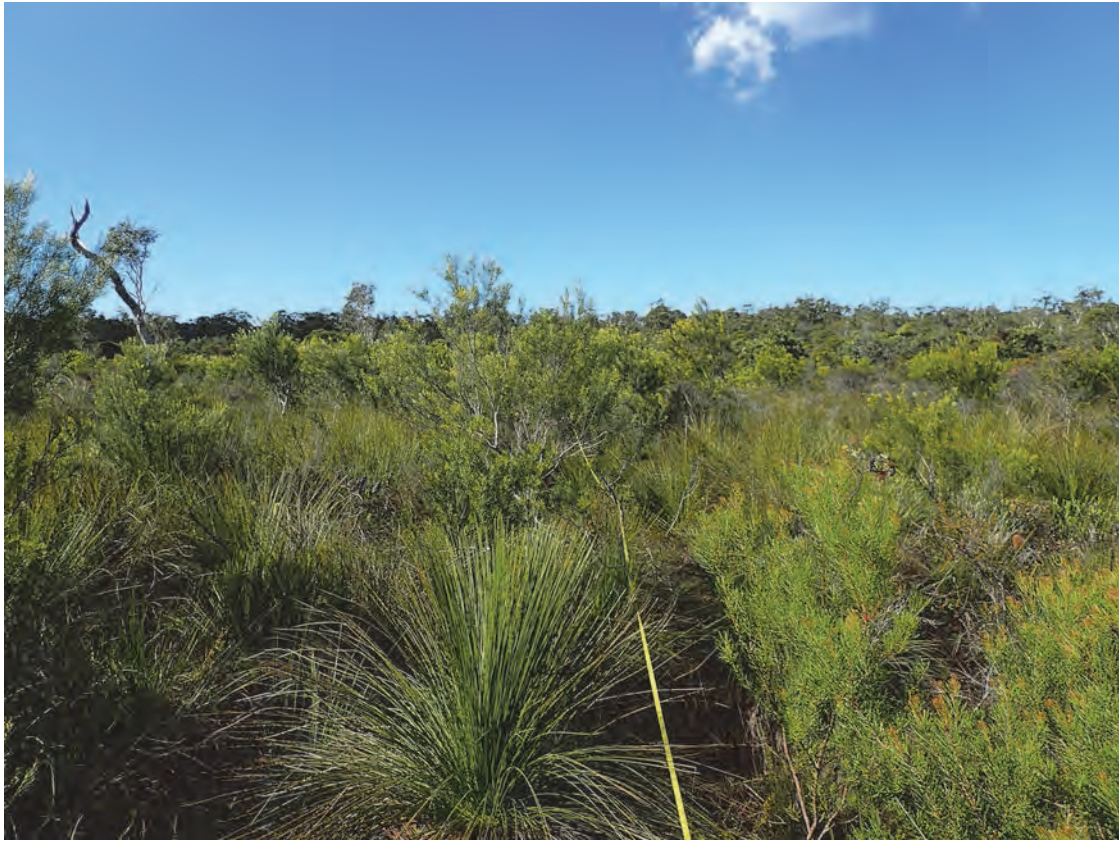
BioCondition Attribute		March 2016	September 2016
Native Plant Species Richness	Tree:		
	Shrub:		18
	Grass Tree		1
	Grass / Sedge		4
	Forbs and other:		7
Total Species No.**			30
Native Shrubs	Projected Canopy Cover – Shrubs > 1m (%)	14	20.5
	Projected Canopy Cover – Shrubs >0.5 to <1m (%)	8.2	7.8
Native Ground cover (%):	Native perennial grass / sedge cover (%):	19.95	25.2
	Native shrubs (%)	10.5	11.65
	Grass tree	32.25	22.5
	Organic litter cover (%):	35.6	39.7
	Native forb cover (%)	1.7	0.95
Coarse woody debris:	Total length (m) of debris \geq 10cm diameter and \geq 0.5m in length per hectare	0	0
Non-native plant cover	Non-native Grasses%	0	0
	Non-native shrubs %	0	0

** Excludes Exotic Species



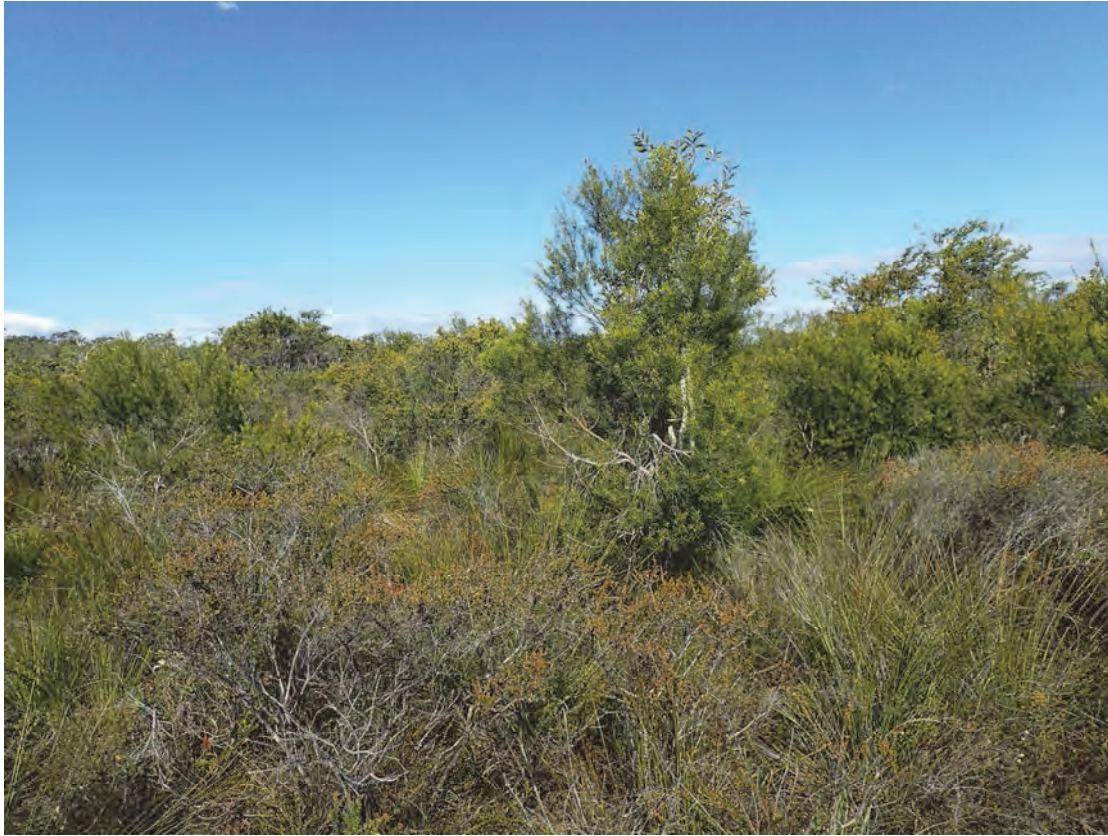
Plot 6 b Centre to Start: April 2017 (Above) and October 2017 (Below).





Plot 6b – Centre to End: April 2016 (Above) and September 2016 (Below).





Plot 6b – Centre to Left: April 2017 (Above) and October 2017 Below).





Plot 6b – Centre to Right: April 2017 (Above) and October 2017 (Below).



Survey Locality 6c

Date of Assessment: 28.04.2017: 13.10.17

Plot Size: 50 m linear transect (Canopy Cover); 50 x 4m transect for S2 shrubs >0.5m; 10 x 1m x 1m quadrats for Ground Cover.

Location (Plot Centreline): Start -26.9852/ 153.1541529; Finish -26.9849 / 153.1545859

Structure: Heath

Shrub Cover** – Canopy Intercept (>50cm) (summarised 50 m transect)

April 2016

Intercept (m)	Species	Shrubs > 1m		Shrubs >0.5 to <1m	
		Intercept S1	Height (M)	Intercept S1	Height (M)
4.3 – 4.8	<i>Aotus lanigera</i>			0.5	0.6
12 – 13.1	<i>Persoonia virgata</i>	1.1	1.6		
17.3 – 18	<i>Baeckea frutescens</i>	0.7	1.2		
18 – 19.2	<i>Persoonia virgata</i>	1.2	1.2		
22 – 24.3	<i>Melaleuca quinquenervia</i>	2.3	3.5		
30.6 – 31.3	<i>Leptospermum polygalifolium</i>	0.6	1.3		
36.4 – 38	<i>Persoonia virgata</i>	1.6	1.5		
43.2 – 43.8	<i>Leptospermum polygalifolium</i>	0.5	1		
44.9– 45.8	<i>Leptospermum liversidgei</i>	0.9	1.4		
44.9– 45.8	<i>Leptospermum liversidgei</i>	0.9	1.4		
48.2 – 48.8	<i>Leptospermum liversidgei</i>	0.6	1		
49.2 – 49.8	<i>Leptospermum liversidgei</i>	0.6	1.4		
Total Cover		11		0.5	
Average Height			1.5		0.5

October 2017

Intercept (m)	Species	Shrubs > 1m		Shrubs >0.5 to <1m	
		Intercept S1	Height (M)	Intercept S1	Height (M)
8.5 - 10	<i>Baeckia frutescens</i>	1.5	1.3		
12.2 – 12.7	<i>Persoonia falcata</i>	0.5	1.1		
13.4 – 13.6	<i>Persoonia falcata</i>	0.2	1.6		
17.3 - 18	<i>Persoonia falcata</i>	0.7	1.3		
18 – 18.8	<i>Agiortia pedicellata</i>	0.8	1.3		
21.5 – 24.3	<i>Melaleuca quinquenervia</i>	2.8	3.3		
24.6 – 25.6	<i>Banksia oblongifolia</i>			1	0.7
30.6 – 31.3	<i>Leptospermum polygalifolium</i>	0.6	1.2		
33 – 33.4	<i>Baeckia frutescens</i>			0.4	0.7
33.4 – 34.7	<i>Persoonia falcata</i>	1.3	2.2		
34.7 – 35.2	<i>Leptospermum liversedgeii</i>	0.5	1		
36.4 – 37.4	<i>Persoonia virgata</i>	1	1.3		
37.6 – 37.9	<i>Boronia falcifolia</i>			0.3	0.6
42.4 – 43.4	<i>Leptospermum liversedgeii</i>	1	1.1		
43.4 – 43.7	<i>Leptospermum polygalifolium</i>	0.3	1		
45.0 – 45.8	<i>Leptospermum liversedgeii</i>	0.8	1.2		
47.2 – 47.6	<i>Boronia falcifolia</i>			0.4	0.8

Intercept (m)	Species	Shrubs > 1m		Shrubs >0.5 to <1m	
		Intercept S1	Height (M)	Intercept S1	Height (M)
48.3 – 48.8	<i>Boronia falcifolia</i>			0.5	0.8
49.1 – 49.8	<i>Leptospermum iiversedgeii</i>	0.7	1.4		
49.7 - 50	<i>Banksia aemula</i>	0.3	3		
Total Cover		13		2.6	
Average Height			1.55		0.72

Stem Counts (50 x 4) – Shrubs > 0.5m

Species	50 m x 4 m Stems (50x4m) April 2016	50 m x 4 m Stems (50x4m) September 2016
	S1 – S2	
<i>Persoonia virgata</i>	22	26
<i>Banksia oblongifolia</i>	10	8
<i>Leucopogon leptospermoides</i>	3	2
<i>Boronia falcifolia</i>	10	11
<i>Phyllota phyllocoides</i>		1
<i>Baeckea frutescens</i>	7	6
<i>Leptospermum liversidgei</i>	28	25
<i>Leptospermum polygalifolium</i>	4	7
<i>Eleocarpus reticulatus</i>	1	1
<i>Melaleuca quinquenervia</i>	2	1
<i>Aotus lanigera</i>	7	5
Totals	94	93

Ground Cover %- 1 x 1m Sub-plots

April 2016

Ground Cover Type	Species	Q1	Q2	Q3	Q4	Q5	Q6	Q7	Q8	Q9	Q10	Mean April 16
Native perennial grass / sedges	<i>Caustis recurvata</i>	5	10	2.5	0.5	10	2.5	10		15	10	29.8
	<i>Sporodanthus interruptus</i>	25	30	15	50	10	25	10	15	10	10	
	<i>Eriachne pallens</i>							0.5				
	<i>Lomandra sp. (divided)</i>				0.5					5	1	
	<i>Lomandra longifolia</i>			2		0.5	0.5	0.5				
	<i>Baloskion</i>							15	5	2		