

PUMP STATION BUILDING REFURBISHMENTS

The existing administration building, blacksmith's workshop and workers' amenity buildings will be retained and refurbished to preserve their heritage values. An old workers' shed will be demolished.

EAST BANK PUMP STATION

The East Bank Pump Station is undergoing upgrades to critical electrical infrastructure and structural strengthening to improve the flood resilience of the heritage listed pump station building.

FOOTPATH

A new footpath will be constructed to improve safety and connectivity for the public.

NEW SUBSTATION / MAJOR ELECTRICITY INFRASTRUCTURE

Location of the new substation with internal access road, servicing area and car park. The new substation is located above 1:10,000 AEP flood level.

MOUNT CROSBY COMMUNITY HALL

Seqwater is working with Brisbane City Council to finalise the next steps for this council owned asset.

MOUNT CROSBY NEW VEHICLE BRIDGE

A new vehicle bridge has been constructed to provide safe access over the Brisbane River. The new bridge provides more flood resilience, while protecting the historic bridge relics in the river bed.

PEDESTRIAN BRIDGE

The existing vehicle bridge on the Mount Crosby Weir will be transformed into a dedicated pedestrian pathway to improve safety and connectivity.

EXISTING SUBSTATION DECOMMISSIONED

The existing substation (1:100 AEP) has reached the end of its operational life and will be decommissioned once the new substation is operational.

EXISTING DUPLEX REPURPOSED

The Drayman's Cottage and Duplex have been refurbished to preserve the heritage value and retained for Seqwater's operational use.

ACCESS ROAD UPGRADES

A new access road from Stumers Road will improve vehicle safety and access into the operational site and to the neighbouring cottages.

EAST BANK PUMP STATION FACILITIES SHED

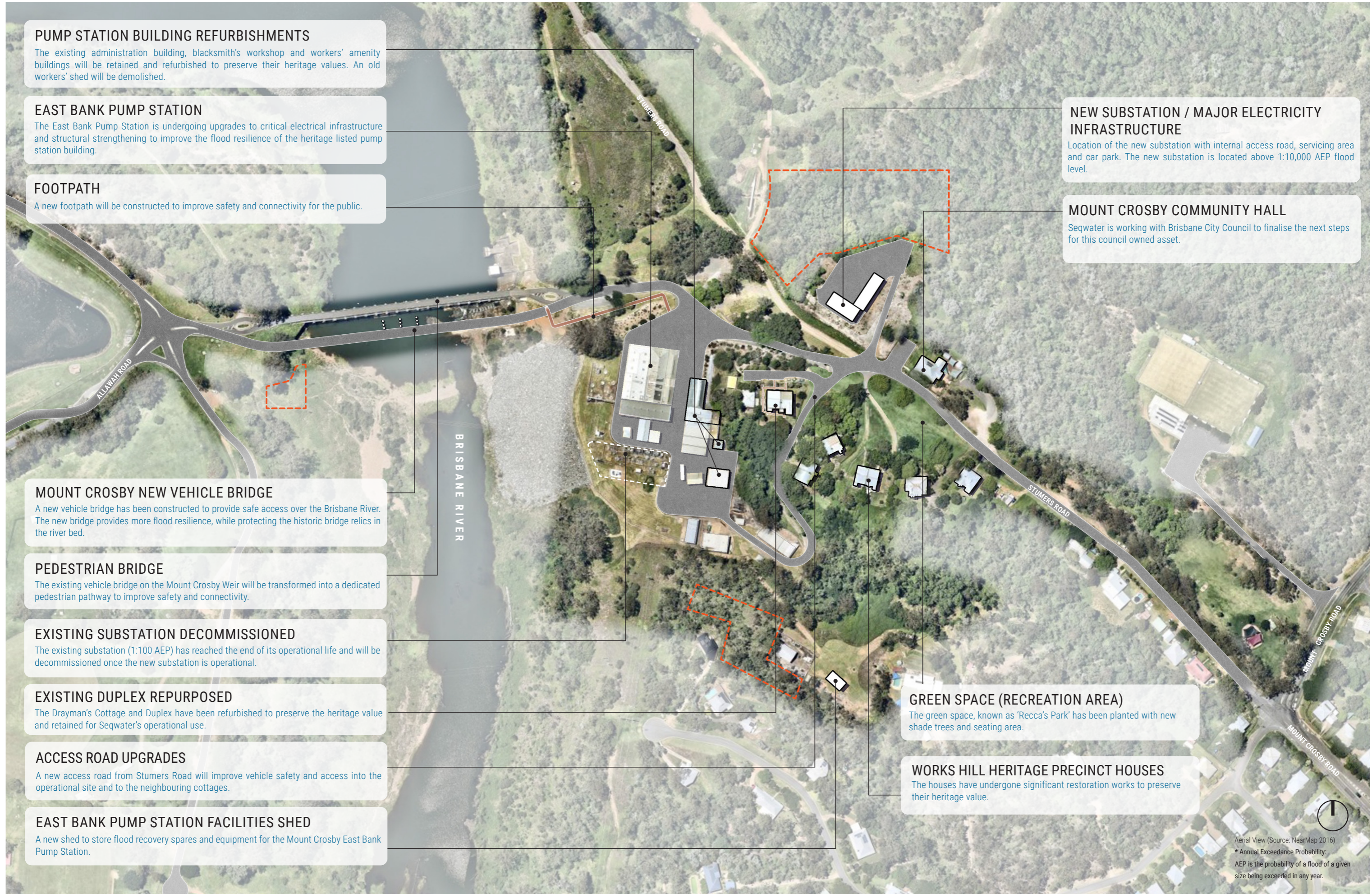
A new shed to store flood recovery spares and equipment for the Mount Crosby East Bank Pump Station.

GREEN SPACE (RECREATION AREA)

The green space, known as 'Recca's Park' has been planted with new shade trees and seating area.

WORKS HILL HERITAGE PRECINCT HOUSES

The houses have undergone significant restoration works to preserve their heritage value.



Aerial View (Source: NearMap 2016)
* Annual Exceedance Probability:
AEP is the probability of a flood of a given size being exceeded in any year.